



Racial Inequities & Disparities: An Ongoing PALTC Challenge

This meeting will be recorded and will be available at www.fmda.org/journalclub.php



FMDA Journal Club

May 26, 2021

Brette Svensson, DNP, MSN, AGPCNP-BC — Special Guest
Diane Sanders-Cepeda, DO, CMD — Host

Agenda



State of the State

Racial Disparities &
Inequities in PALTC

Open Discussion

COVID-19 Dashboard by the Center for Systems Science and Engineering (CSSE) at Johns Hopkins University (JHU)

Last Updated at (M/D/YYYY)
5/26/2021, 8:21 AM

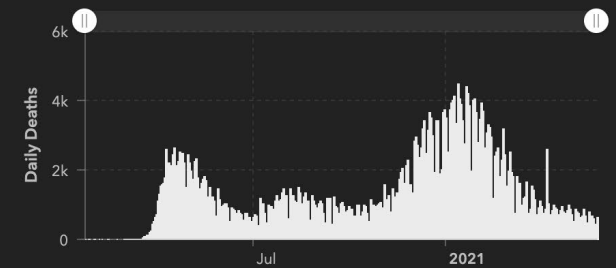
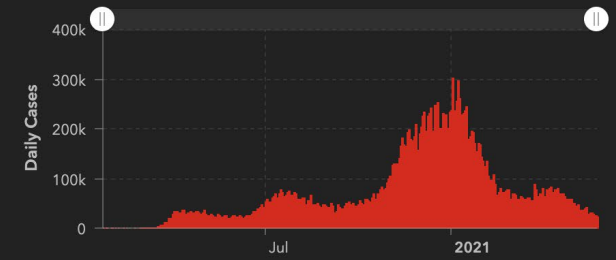
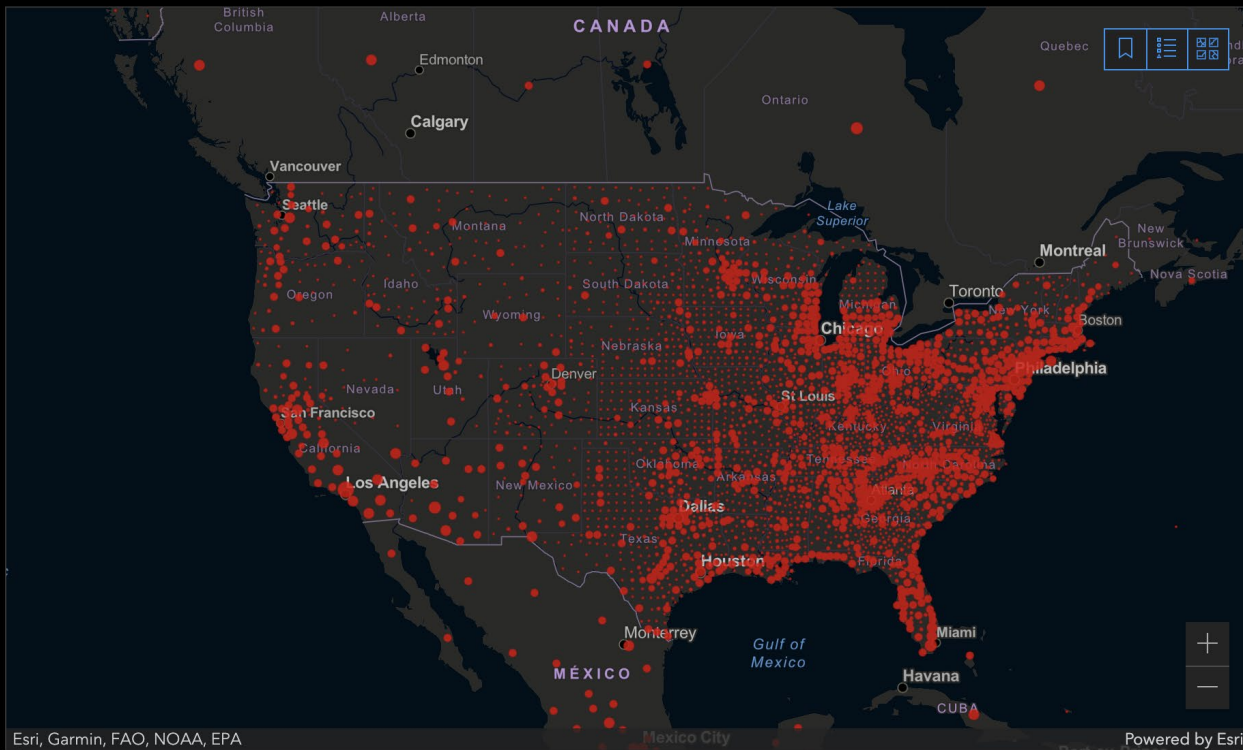
Cases
33,166,902

Deaths
590,994

Vaccine Doses Administered
287,330,821

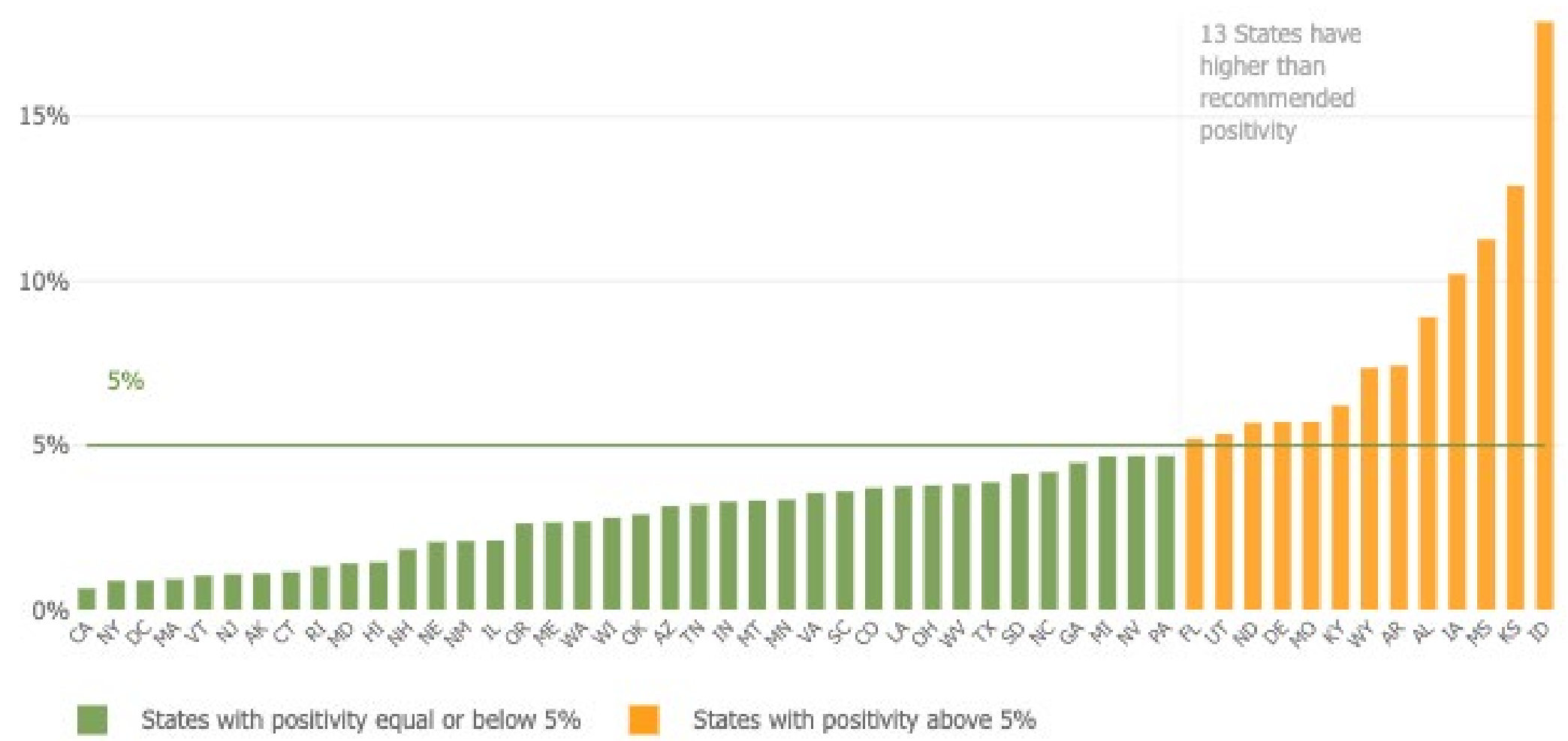
Cases and Deaths by Country/Region/Sovereignty

33,166,902 590,994
US
27,157,795 311,388
India
16,194,209 452,031
Brazil
5,670,557 109,041
France
5,203,385 46,621
Turkey
4,968,421 117,595
Russia
4,483,177 128,001
United Kingdom
4,197,892 125,501
Italy
3,664,278 87,734
Germany
3,652,879 79,801
Spain





Positivity Percentage
(average of the last 7 days)



COVID-19 Vaccinations in the United States

Overall US COVID-19 Vaccine | Deliveries and Administration; Maps, charts, and data provided by CDC, updates daily by 8 pm ET[†]

Represents all vaccine partners including jurisdictional partner clinics, retail pharmacies, long-term care facilities, dialysis centers, Federal Emergency Management Agency and Health Resources and Services Administration partner sites, and federal entity facilities.

How Do I Find a COVID-19 Vaccine?

Total Vaccine Doses

Delivered **359,004,955**

Administered **287,788,872**


[Learn more about the distribution of vaccines.](#)

People Vaccinated

At Least One Dose

Fully Vaccinated

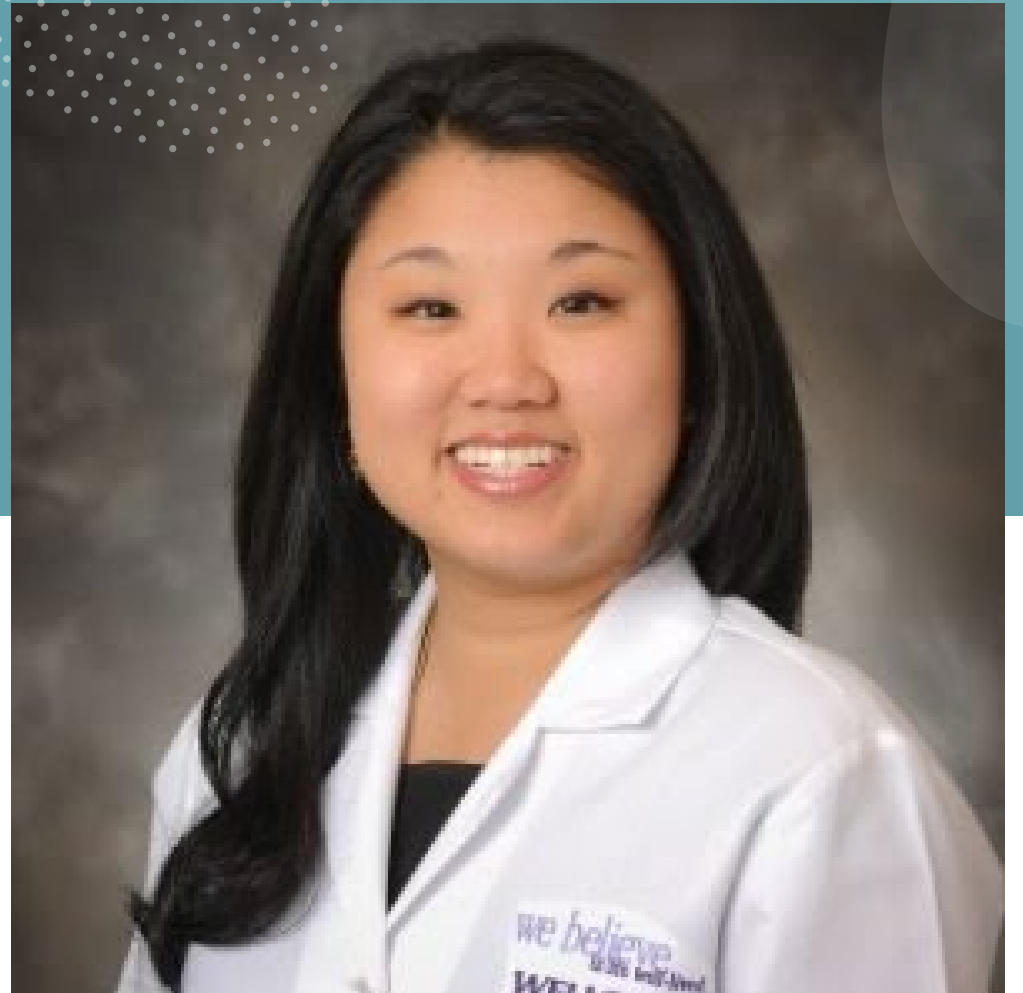
Total	164,378,258	131,078,608
% of Total Population	49.5%	39.5%
Population ≥ 12 Years of Age	164,272,277	131,070,055
% of Population ≥ 12 Years of Age	58.6%	46.8%
Population ≥ 18 Years of Age	158,954,785	129,054,480
% of Population ≥ 18 Years of Age	61.6%	50%
Population ≥ 65 Years of Age	46,674,798	40,443,453
% of Population ≥ 65 Years of Age	85.3%	73.9%

 About these data

CDC | Data as of: May 25, 2021 6:00am ET. Posted: Tuesday, May 25, 2021 2:18 PM ET

Racial Disparities & Inequities in PALTC

Brette Svensson, DNP, MSN, AGPCNP-BC

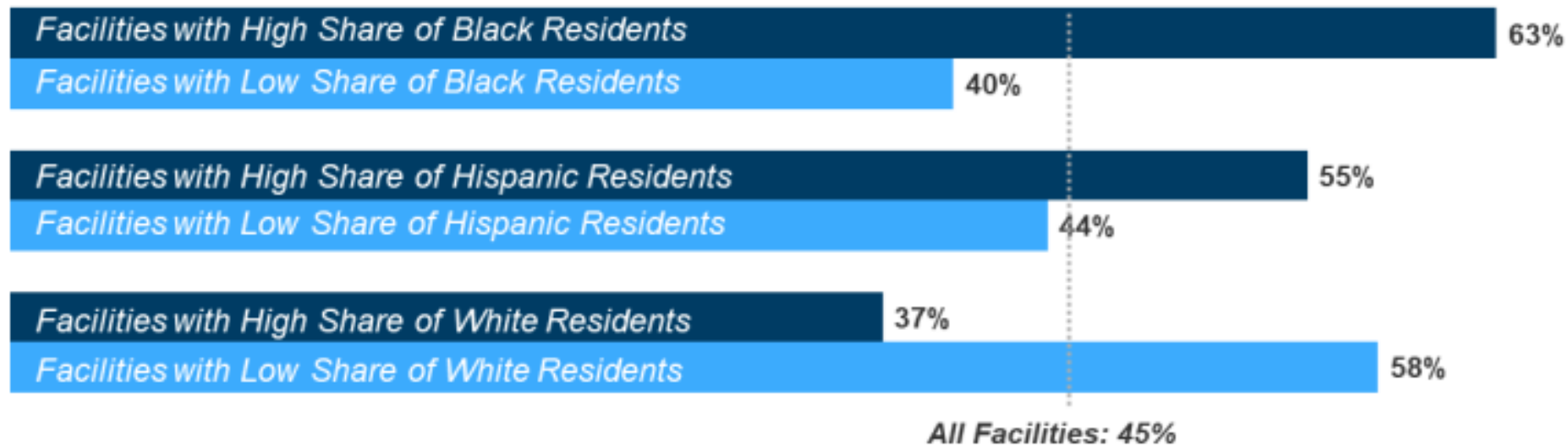


COVID & Racial Disparities

Figure 1

Nursing Homes With Relatively High Shares of Black or Hispanic Residents Were More Likely To Have At Least One COVID-19 Death

Share of Nursing Homes With At Least One COVID-19 Death (as of October 11, 2020):



NOTES: Includes 13,982 nursing homes for which race/ethnicity data were available for all groups and for which resident cases or deaths were not > total number of beds. High share of Black residents or Hispanic residents refers to 20% or more. High share of White residents is 80% or more. Facilities may fall into more than one of these groups.

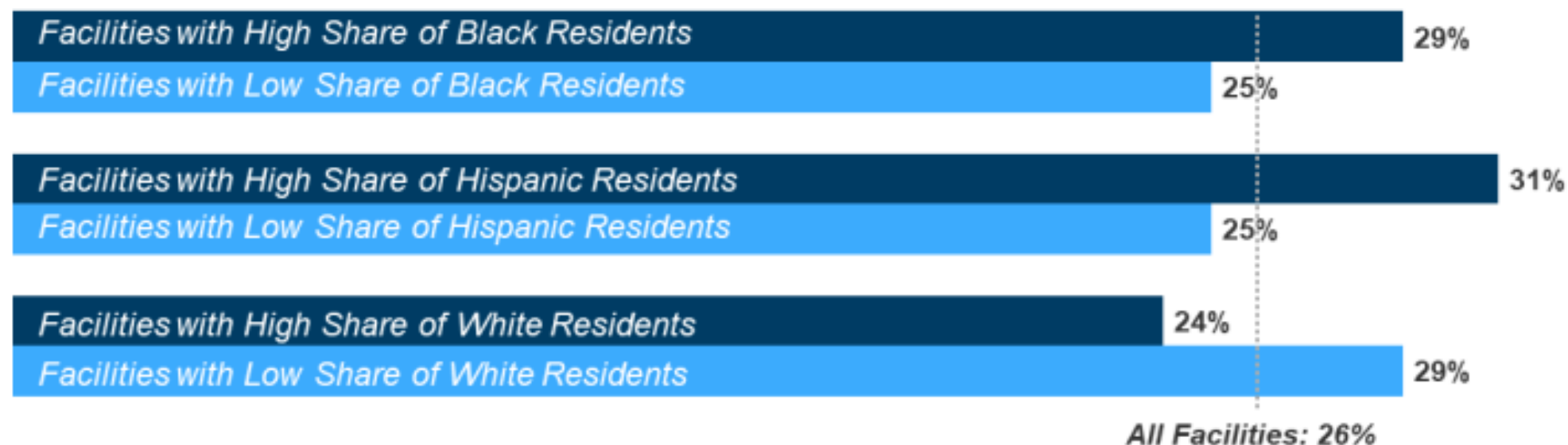
SOURCE: KFF analysis of Shaping Long Term Care in America Project at Brown University funded in part by the National Institute on Aging (1P01AG027296), CMS COVID-19 Nursing Home Data (as of October 11, 2020)



Figure 3

Coronavirus Infection Outbreaks Were More Severe in Nursing Homes With A Relatively Large Share of Black or Hispanic Residents

Confirmed/Suspected Coronavirus Cases As A Share of Nursing Home Beds (as of October 11, 2020):



NOTES: Includes 11,296 nursing homes with at least one coronavirus case and where resident cases were not > total number of beds. High share of Black residents or Hispanic residents refers to 20% or more. High share of White residents is 80% or more. Facilities may fall into more than one of these groups.

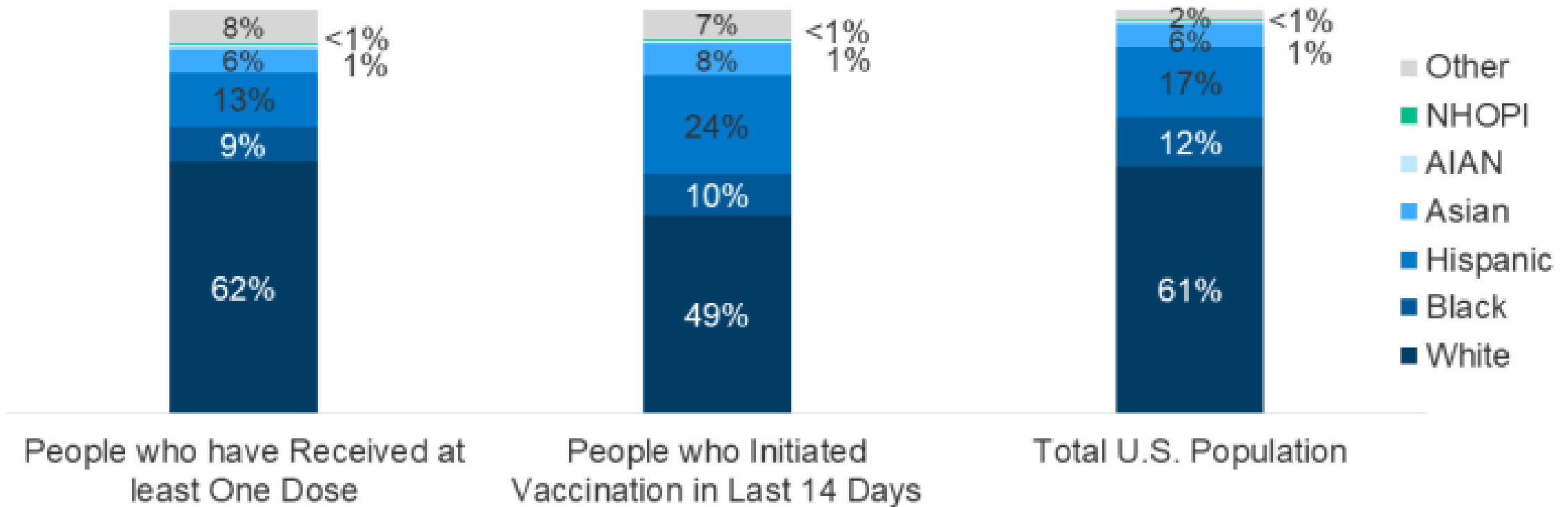
SOURCE: KFF analysis of Shaping Long Term Care in America Project at Brown University funded in part by the National Institute on Aging (1P01AG027296), CMS COVID-19 Nursing Home Data (as of October 11, 2020)



Figure 1

Race/Ethnicity of People Receiving a COVID-19 Vaccine in the U.S. Based on CDC Data

As of May 17, 2021, based on race/ethnicity data available for 56% of people who have received at least one vaccine dose:



SOURCE: Centers for Disease Control and Prevention, Demographic Characteristics of People Receiving COVID-19 Vaccinations in the United States, data as of May 17, 2021, accessed May 18, 2021, <https://covid.cdc.gov/covid-data-tracker/#vaccination-demographic>.

Addressing Inequalities & Disparities in PALTC

Case Reviews



Case of “Finally someone who speaks English”

How do we deal with staff discrimination?

Case of “I don’t want to see that Clinician”

What happens when the discrimination is towards the clinician?

Case of “Sorry Doctor I don’t understand”

How are we delivering information
to our patients, their families, and
the staff?

Case of the Dementia patient who uses racial slurs



How should we approach this patient and the staff who cares for him or her?



Are We There Yet?

Moving the conversation forward...

A close-up, shallow depth-of-field photograph of a desk. In the foreground, an open notebook with a black pen lies on it. The notebook's pages are lined, and some faint numbers are visible on the right page. In the background, a laptop is partially visible, along with a pair of glasses and a stack of papers. A smartphone is on the right side of the desk. The overall scene is brightly lit, suggesting a clean, organized workspace.

Open Discussion



THE FLORIDA SOCIETY
FOR POST-ACUTE AND
LONG-TERM
CARE MEDICINE

**400 Executive Center Drive, Suite 208
West Palm Beach, FL 33401**

www.fmda.org; www.bestcarepractices.org



This meeting has been recorded and will be available at www.fmda.org/journalclub.php