

AGA Institute Rapid Review of the GI and Liver Manifestations of COVID-19, Meta-Analysis of International Data, and Recommendations for the Consultative Management of Patients with COVID-19

Authors: Shahnaz Sultan*¹, Osama Altayar*², Shazia M. Siddique³, Perica Davitkov⁴, Joseph D. Feuerstein⁵, Joseph K. Lim⁶, Yngve Falck-Ytter⁴, Hashem B. El-Serag⁷ on behalf of the AGA

*co-first authors

Affiliations:

1. Division of Gastroenterology, Hepatology, and Nutrition, University of Minnesota, Minneapolis VA Healthcare System, Minneapolis, Minnesota
2. Division of Gastroenterology, Washington University School of Medicine, St. Louis, Missouri
3. Division of Gastroenterology, University of Pennsylvania Perelman School of Medicine, Philadelphia, Pennsylvania
4. Division of Gastroenterology, Northeast Ohio Veterans Affairs Healthcare System, Case Western Reserve University School of Medicine, Cleveland, Ohio
5. Division of Gastroenterology and Center for Inflammatory Bowel Diseases, Beth Israel Deaconess Medical Center, Boston, Massachusetts
6. Yale Liver Center and Section of Digestive Diseases, Yale University School of Medicine, New Haven, Connecticut
7. Department of Medicine, Baylor College of Medicine, Houston, Texas

Address for Correspondence:

American Gastroenterological Association
National Office, 4930 Del Ray Avenue
Bethesda, Maryland 20814
E-mail: ewilson@gastro.org
Telephone: (301) 941-2618

Keywords: COVID-19, gastrointestinal and liver manifestations

This document represents the official recommendations of the American Gastroenterological Association (AGA) and was developed by the AGA Clinical Guideline Committee and Clinical Practice Update Committee and approved by the AGA Governing Board. Development of this guideline was fully funded by the AGA Institute with no additional outside funding.

Conflict of interest disclosure: All members were required to complete the disclosure statement. These statements are maintained at the American Gastroenterological Association

(AGA) headquarters in Bethesda, Maryland, and pertinent disclosures are published with this report.

Expiration Date: 3 months

Abstract

Background: Multiple gastrointestinal (GI) symptoms including diarrhea, nausea/vomiting, and abdominal pain, as well liver enzyme abnormalities have been variably reported in patients with COVID-19. The AGA) Institute Clinical Guideline Committee and Clinical Practice Updates Committee performed a systematic review and meta-analysis of international data on GI and liver manifestations of COVID-19.

Methods:

We performed a systematic literature search to identify published and unpublished studies using OVID Medline and pre-print servers (medRxiv, LitCovid, and SSRN) up until April 5 2020; major journal sites were monitored for US publications until April 19 2020. We analyzed the prevalence of diarrhea, nausea, vomiting, and abdominal pain as well as LFT abnormalities using a fixed effect model and assessed the certainty of evidence using GRADE.

Results: We identified 118 studies and used a hierarchal study selection process to identify unique cohorts. We performed a meta-analysis of 47 studies including 10,890 unique patients. Pooled prevalence estimates of GI symptoms was diarrhea 7.7% (95% CI 7.2-8.2), nausea/vomiting 7.8% (95% CI 7.1-8.5), abdominal pain 2.7% (95% CI 2.0-3.4). Most studies reported on hospitalized patients. The pooled prevalence of elevated liver abnormalities was: AST 15.0% (13.6 to 16.5) and ALT 15.0% (13.6 to 16.4). When analyzed comparing data from China to studies from countries other than China, diarrhea, nausea/vomiting, liver abnormalities were more prevalent outside of China with diarrhea reported in 18.3% (16.6 to 20.1). Isolated GI symptoms were rarely reported. We also summarized of the GI and liver adverse effects of the most commonly utilized medications for COVID19

Conclusions:

GI symptoms are associated with COVID-19 in less than 10% of patients. In studies outside of China, estimates are higher. Further studies are needed with standardized GI symptoms questionnaires and LFT checks on admission to better quantify and qualify the association of these symptoms with COVID-19. Based on findings from our meta-analysis, we make several Best Practice Statements for the consultative management of COVID-19.

Table 1. Summary of Best Practice Statements: Consultative Management of COVID-19

1	In outpatients with new onset diarrhea, (i) ascertain information about high risk contact exposure (ii) obtain a detailed history of symptoms associated with COVID-19, including fever, cough, shortness of breath, chills, muscle pain, headache, sore throat, or new loss of taste or smell (iii) obtain a thorough history for other GI symptoms, including nausea, vomiting, and abdominal pain.
2	In outpatients with new onset GI symptoms (e.g., nausea, vomiting, abdominal pain, diarrhea), monitor for symptoms associated with COVID-19 as GI symptoms may precede COVID-related symptoms by a few days. In a high COVID-19 prevalence setting, COVID-19 testing should be considered.
3	In hospitalized patients with suspected or known COVID-19, obtain a thorough history of GI symptoms (nausea, vomiting, abdominal pain, diarrhea) including onset, characteristics, duration, and severity.
4	There is presently inadequate evidence to support stool testing for diagnosis or monitoring of COVID-19 as part of routine clinical practice.
5	In patients (outpatients or inpatients) with elevated LFTs in context of suspected or known COVID-19, evaluate for alternative etiologies.
6	In hospitalized patients with suspected or known COVID-19, obtain baseline LFTs at the time of admission, and consider LFT monitoring throughout the hospitalization, particularly in the context of drug treatment for COVID-19.
7	In hospitalized patients undergoing drug treatment for COVID-19, evaluate for treatment-related GI and hepatic adverse effects.

Introduction

The coronavirus family has four common human coronaviruses (229E, NL63, OC43, HKU1) associated with the common cold, and three strains are associated with pneumonia, respiratory failure, and death, including SARS-CoV (severe acute respiratory syndrome coronavirus), MERS-CoV (Middle Eastern respiratory syndrome coronavirus), and SARS-CoV-2 (severe acute respiratory syndrome coronavirus 2).¹ The novel coronavirus, SARS-CoV-2, was first described in December 2019 in patients in Wuhan, China who developed severe pneumonia, and was named coronavirus-19 disease (COVID-19) by the World Health Organization on February 11, 2020.² COVID-19 is estimated to have resulted in 2,896,633 cases in 185 countries with 202,832 deaths as of April 25, 2020.³ COVID-19 was first reported in the United States (U.S.) on January 20, 2020 and accounted for a total number of 938,154 cases and 53,755 deaths as of April 25, 2020. In the U.S., an early analysis of the first 4,226 cases from

the Centers for Disease Control and Prevention (CDC) as of March 16, 2020, revealed estimated rates of hospitalization (20.7-31.4%), Intensive Care Unit (ICU) admission (4.9-11.5%), and case fatality (1.8-3.4%).⁴ More recent data from a cohort of 5700 hospitalized patients with COVID-19 within a large healthcare system in New York City revealed common comorbidities including hypertension (56.6%), obesity (41.7%), and diabetes (33.8%), and reported that 373 (14.2%) of patients required treatment in the intensive care unit, and 320 (12.2%) received invasive mechanical ventilation, in whom the mortality was 88.1% (282/320)].⁵

ACE2 (angiotensin converting enzyme II), believed to be the target entry receptor for SARS-coV2, is abundantly expressed in gastric, duodenal, and rectal epithelia, thereby implicating ACE2 as a vehicle for possible fecal-oral transmission.⁶ Furthermore, ACE2 receptors may be expressed in hepatic cholangiocytes⁷ and hepatocytes⁸, potentially permitting direct infection of hepatic cells.

Non-GI symptoms for COVID-19 include fever, cough, shortness of breath, chills, repeated shaking with chills, muscle pain, headache, sore throat, and new loss of taste or smell. Gastrointestinal (GI) symptoms, including anorexia, nausea, vomiting, abdominal pain, and/or diarrhea have been reported in patients with COVID-19. Additionally, abnormal liver enzymes are also observed.⁹ However, significant heterogeneity has been observed in the reporting of GI and liver symptoms across settings.¹⁰ The most commonly reported GI symptom in COVID-19 is diarrhea, which has been reported in 1-36% of patients.¹⁰ An updated characterization of the GI and liver manifestations across global settings is needed to further inform clinical guidance in the management of patients with COVID-19.

Scope and Purpose

We seek to summarize international data on the GI and liver manifestations of COVID-19 infection and treatment. Additionally, this document provides evidence-based clinical guidance on clinical questions that gastroenterologists may be consulted for. This rapid review document was commissioned and approved by the AGA Institute Clinical Guidelines Committee (CGC), AGA Institute Clinical Practice Updates Committee (CPUC), and the AGA Governing Board to provide timely, methodologically rigorous guidance on a topic of high clinical importance to the AGA membership and the public.

Panel Composition and Conflict of Interest Management

This rapid review and guideline was developed by gastroenterologists and guideline methodologists from the two AGA committees. The guideline panel worked collaboratively with the AGA Governing Board to develop the clinical questions, review the evidence profiles and develop the recommendations. Panel members disclosed all potential conflicts of interest according to the AGA Institute policy.

Target Audience

The target audience of this guideline includes gastroenterologists, advanced practice providers, nurses, and other health care professionals. Patients as well as policy makers may also benefit from these guidelines. These guidelines are not intended to impose a standard of care for individual institutions, healthcare systems or countries. They provide the basis for rational informed decisions for clinicians, patients and other health care professionals in the setting of a pandemic.

Methods

Information sources and literature search

We conducted a systematic literature search to identify all published and unpublished studies that could be considered eligible for our review with no restrictions on languages. In the setting of a pandemic with exponential increases in published and unpublished studies, our search strategy was multifaceted. To capture relevant published articles, we electronically searched OVID Medline from inception to March 23, 2020 using the MeSH term developed for COVID-19. We then searched the following platforms on April 5th, 2020 for additional published and unpublished studies: medRxiv, LitCovid¹¹, and SSRN. An additional unpublished article in peer review was obtained through personal communication. For studies from the US, we continued to monitor major journals for additional publications until April 19th, 2020.

Study selection and data extraction

Independent screening of titles and abstracts was performed by one reviewer (PD, SS, JF) to identify potential studies for inclusion. A second reviewer (OA) subsequently reviewed the full-text articles and identified articles for inclusion. Any disagreements about inclusion were resolved through discussion. We incorporated any studies (prospective or retrospective) that reported on patient characteristics and symptoms of interest. For studies published in Chinese, we used Google translate to assess for potential inclusion and for data extraction.

Due to concerns about inclusion of the same patients in different publications, we used a hierarchical model of data extraction to minimize double counting of patients across similar institutions with coinciding dates of study inclusion. We aimed to identify and include data from the largest possible cohort from each location or hospital.¹² Thus, data extraction was performed using a two-step process. The initial data extraction focused on data elements for study and patient characteristics. Subsequently, we identified

studies for full data extraction based on study location (unique hospitals) and total number of patients. Additionally, when a study from a specific hospital did not provide all the necessary information for the diarrhea symptoms, the next largest study from the same hospital (when available) was selected for inclusion in our analysis.

Data extraction was performed using a standardized Microsoft Excel data extraction form. Data extraction was performed in pairs; one study author independently extracted data while the second reviewer checked for accuracy of the data extraction (SS, OA, SMS, PD, JDF, JKL, YFY, HBE). Since the reporting of the data in the primary studies was suboptimal, a third reviewer (OA) additionally verified the extracted data to confirm the numbers and to resolve any disagreements. Studies with discrepancies in the data were excluded.

The following data elements were extracted:

1. Study: author, year, location (hospital(s) name, city, province or state), dates of inclusion, date of last follow-up
2. Patient characteristics: number of patients (N), age (mean, median, interquartile interval (IQR) or range), # of females, severity of illness, inclusion criteria (hospitalized or outpatients), GI comorbidities (pre-existing conditions, such as chronic liver disease, hepatitis, inflammatory bowel disease)
3. Outcomes: diarrhea, nausea, vomiting, abdominal pain, LFT abnormalities
4. Additional information: severity/character/duration/timing (before or concurrent with respiratory symptoms) and relationship with clinical outcomes (need for ventilator, survival, discharge, continued hospitalization), viral stool shedding.

Assessment of Risk of Bias

We assessed the risk of bias according to the following domains as suggested in the ROBINS-I tool for non-randomized studies.¹³

1. Bias due to selection of participants in the study
2. Bias due to missing data
3. Bias in the measurement of outcomes
4. Bias in the selection of the reported result

We considered the domains for each study and then made a judgement of high or low risk of bias for the studies included in the meta-analysis.

Certainty of Evidence

Certainty of evidence was evaluated using the GRADE framework. The certainty of evidence was categorized into 4 levels ranging from very low to high. Within the GRADE framework, evidence from randomized controlled trials (RCTs) starts as high-

certainty evidence and observational studies start out as low certainty evidence but can be rated down for several reasons: risk of bias, inconsistency, indirectness, imprecision, and publication bias. Additionally, evidence from well conducted observational studies start as low certainty evidence but can be rated up for large effects or dose-response.¹⁴

Data Synthesis and Analysis

A meta-analysis of prevalence of GI and liver abnormalities was performed using *meta 4.11-0* package in *R* version 3.6.3 software.^{15, 16} The prevalence was expressed as a proportion and 95% confidence interval (95% CI). We used the fixed effects model using the Freeman-Tukey double arcsine transformation method for proportions. This is the preferred method of transformation and avoids giving an undue larger weight to studies with very large or very small prevalence.^{17, 18} The I^2 statistic was used to measure heterogeneity.¹⁹ To explore heterogeneity, we performed subgroup analyses based on the location (region) of the study and clinical settings (inpatient versus outpatient). To assess the robustness of our results, we performed sensitivity analyses by limiting the included studies to those that clearly reported the presence of symptoms at initial presentation.

Results

A total of 57 studies were ultimately selected for complete data extraction; 56 from our search and one additional manuscript (under review) was included to provide more data on a US cohort.²⁰⁻⁷⁶ See **Supplement Figure 1** for PRISMA flow diagram. Of the 57 selected studies, 47 studies reported on unique patients based on hospital name (with no duplication of cohorts from the same hospital). An additional 10 studies were identified with potentially overlapping cohorts based on hospital name, but these were included if they provided unique information about a specific symptom (e.g., diarrhea at initial presentation when the larger cohort did not clearly state that it was at initial presentation). Based on our comprehensive selection process, we believe that the included 47 studies reported data on 10,890 unique COVID-19 patients. The majority of studies (70%) in our analysis were from China; these were selected out of 118 reports published or pre-published from China. See **Supplement Figure 2**. The studies included mainly adults, although a few studies included a small proportion of pediatric patients. Two studies reported on outpatients only, whereas the remaining 55 studies reported on hospitalized patients, or a combination of outpatients and hospitalized patients. Based on our inclusion strategy: 55 (96%) studies provided information on any GI symptom and 32 (56%) studies reported any data on liver abnormalities. Fewer studies, 21 (37%), provided information on underlying GI conditions.

Table 2: Summary of the pooled prevalence estimates of GI/Liver Manifestations

GI and Liver Symptoms	All Studies % (95% CI)	Studies from China % (95% CI)	Studies from countries other than China % (95% CI)
Diarrhea in all Patients*	7.7% (7.2 to 8.2) N/n = 43/10,676	5.8% (5.3 to 6.4) N/n = 32/8,612	18.3% (16.6 to 20.1) N/n = 11/2,064
Nausea/Vomiting in all Patients*	7.8% (7.1 to 8.5) N/n = 26/5,955	5.2% (4.4 to 5.9) N/n = 19/4,054	14.9% (13.3 -16.6) N/n = 7/1,901
Abdominal Pain*	3.6% (3.0 to 4.3) N/n = 15/4,031	2.7% (2.0 to 3.4) N/n = 10/2,447	5.3% (4.2 to 6.6) N/n = 5/1,584
Patients with Elevated AST	15.0% (13.6 to 16.5) N/n = 16/2,514	14.9% (13.5 to 16.4) N/n = 14/2,398	20.0% (12.8 to 28.1) N/n = 2/116
Patients with Elevated ALT	15.0% (13.6 to 16.4) N/n = 17/2,711	14.9% (13.5 to 16.3) N/n = 15/2,595	19.0% (12.0 to 27.1) N/n = 2/116
Patients with Elevated T. Bilirubin	16.7% (15.0 to 18.5) N/n = 10/1841	16.7% (15.0 to 18.5) N/n = 10/1841	-

*Regardless of Hospitalization and Timing of Symptoms.

Abbreviations: T. Bilirubin=total bilirubin; CI=confidence interval; N=number of studies; n=number of patients.

Overall Certainty of Evidence

The overall certainty in the body of evidence was low. Our confidence in the pooled estimates of prevalence was reduced because of concerns of risk of bias (selection bias, detection bias and attrition bias), heterogeneity of the tested patient populations (inconsistency), as well as issues of indirectness (the majority of studies included primarily symptomatic hospitalized patients instead of all patients with COVID-19). Additionally, most of the studies were retrospective cohort series and did not specify if consecutive patients were included in the analysis. Other limitations included inconsistent assessment of symptoms and/or laboratory tests, missing data and/or inconsistent reporting of data, and insufficient follow up of the patients. These factors may have contributed to the heterogeneity of findings across studies. The I² statistic ranged from 77% to 98% and was not completely explained by geographic location or by outpatient versus inpatient status.

1. What are the GI Manifestations of COVID-19?

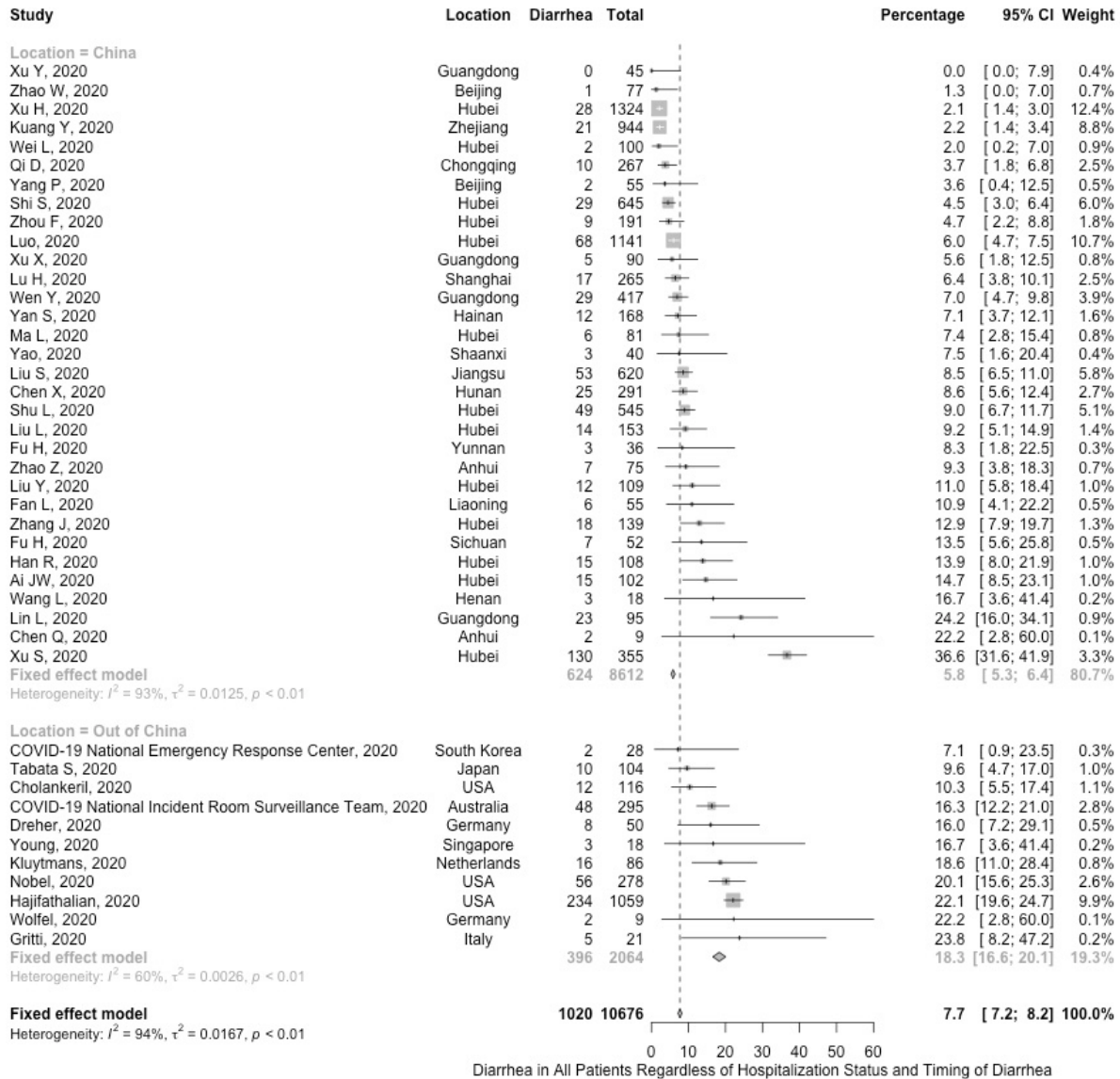
Diarrhea

A total of 43 studies including 10,676 COVID-19 patients (confirmed by laboratory RT-PCR testing), were included in the overall analysis.^{20-35, 37, 38, 41, 42, 45, 47, 49-55, 58, 59, 62-71, 73,}

⁷⁶ The pooled prevalence of diarrhea symptoms across these studies was 7.7% (95% CI

7.2 to 8.2). When analyzing by country (studies from China versus studies from other countries), the pooled prevalence of diarrhea in studies from countries other than China was much higher at 18.3% (95% CI 16.6 to 20.1). This is in comparison to studies from China where the prevalence was much lower: 5.8% (95% CI 5.3 to 6.4) See **Figure 1**.

Figure 1. Forest plot of the prevalence of diarrhea in all patients



In hospitalized patients, across 39 studies including 8,521 patients, the pooled prevalence was slightly higher at 10.4% (95% CI 9.4 to 10.7) as compared with outpatients.^{20-23, 25-28, 30, 33-35, 38, 41, 42, 44-46, 49-55, 60, 62-68, 70-74, 76} In 3 studies including 1701 outpatients, the pooled prevalence was 4.0% (95% CI 3.1 to 5.1).^{31, 59, 63} As part of the sensitivity analysis, we identified 35 studies including 9,717 patients that described diarrhea, and explicitly reported that it was one of the initial presenting symptoms.^{20-23,}

26-28, 31, 33-35, 38, 41, 42, 44, 45, 47, 48, 50-55, 60, 63-66, 68-71, 74, 76 The pooled prevalence in these studies was 7.9% (95% CI 7.4 to 8.6%). A total of 28 studies including 8070 patients reported on **hospitalized** COVID-19 patients presenting with diarrhea as one of the initial symptoms of COVID-19 symptoms.^{20-23, 26-28, 33-35, 38, 41, 42, 44, 45, 48, 50-55, 60, 63-66, 68, 70-73, 76} The pooled prevalence was 9.3% (95% CI 8.6 to 9.9%). See **Supplement Figures 3-6**.

Description of diarrhea

Only a handful of studies provided any details on the type and severity of diarrhea symptoms.^{55, 60, 74} In the study by Lin et al, 23/95 (24%) patients reported having diarrhea (described as loose or watery stools, ranging from 2-10 bowel movements per day), however only a small number of patients actually had diarrhea on admission (5.2%).⁵⁵ Most patients developed diarrhea during the hospitalization which may have been attributable to other treatments or medications. In the study by Jin et al. of 651 hospitalized patients, 8.6% of patients had diarrhea on admission prior to receiving any treatments. The diarrhea symptoms were described as > 3 loose stools per day. Stool cultures were negative (including *C. difficile*) in all patients. There was no mention of fecal leukocytes. Median duration of symptoms was 4 days (range 1-9 days) and most patients had self-limited diarrheal symptoms.⁶⁰ One additional study on 175 hospitalized patients reported that 19.4% of patients had diarrhea with an average of 6 episodes per day with symptom duration ranging from 1-4 days.⁷⁴

Diarrhea as the only presenting symptom in the absence of upper respiratory symptoms

In the 43 studies that informed our analysis on the prevalence of diarrhea, we extracted information on whether diarrhea was reported as the only presenting symptom.^{50, 60} In only 2 studies, there was explicit reporting of diarrhea in the absence of URI symptoms. In a study by Luo et al. of 1141 patients, 183 patients (16%) presented with GI symptoms only in the absence of respiratory complaints. Out of 1141 patients, loss of appetite (15.8%), nausea or vomiting (11.7%), were the most common symptoms but diarrhea was reported in 6.0%, and abdominal pain in 3.9% of patients. Notably, the majority of patients (96%) had lung infiltrates on chest CT.⁵⁰ In the study by Jin et al of 651 hospitalized patients, 21 (3.2%) patients presented with GI symptoms only (and no respiratory symptoms of coughing or sputum production).⁶⁰ GI symptoms were defined as at least one of the following symptoms: nausea, vomiting, and diarrhea. Conversely, in the US study of 116 patients with COVID-19, Cholankeril et al. reported that 31.9% of patients had GI symptoms on admission (median duration 1 day): diarrhea was reported in 10.3% (12/116), nausea and/or vomiting in 10.3% (12/116) and abdominal pain in 8.8% (10/116). The authors explicitly reported that none of the 116 patients had isolated GI symptoms as the only manifestation of COVID-19.⁷⁰

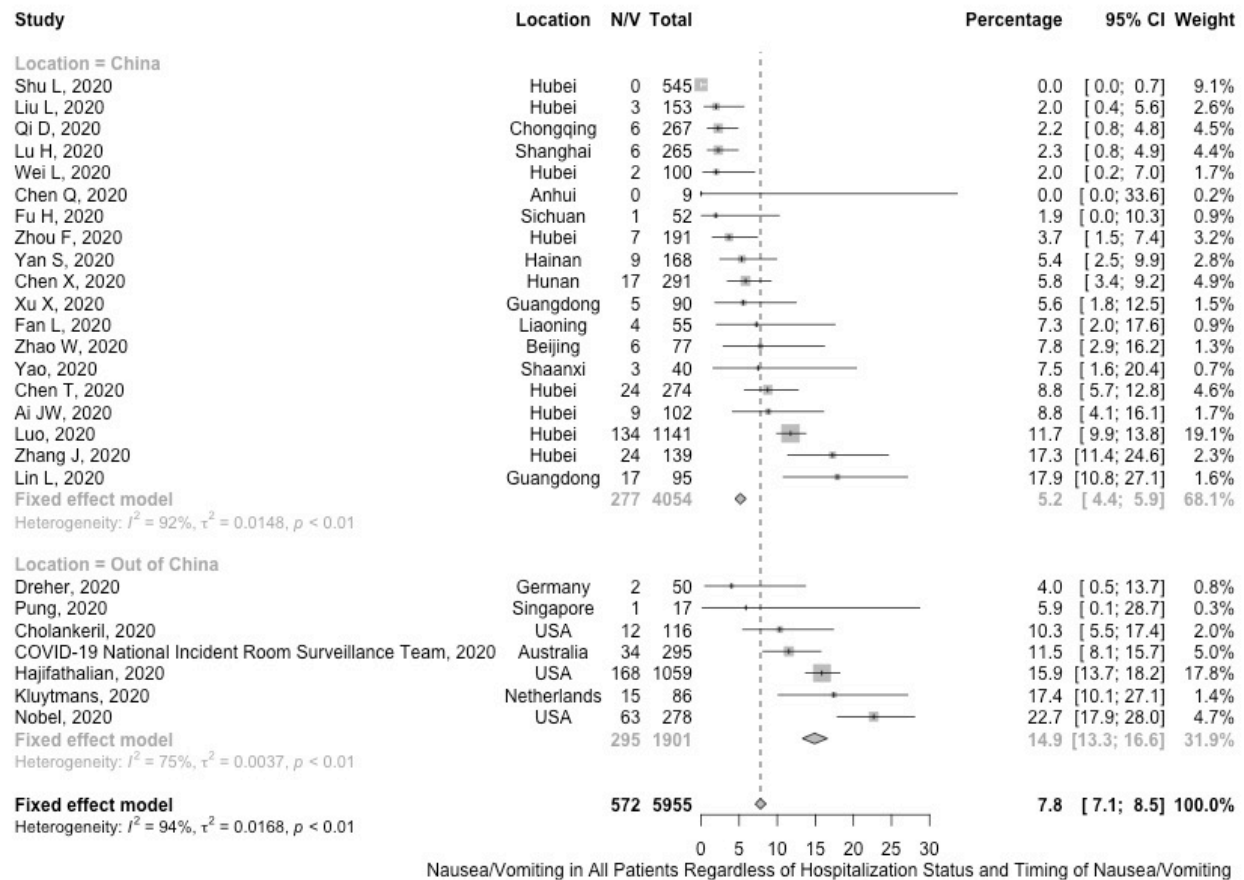
Diarrhea as the initial presenting symptom preceding other COVID-19 symptoms

Of the studies included in our review, based on our selection framework, we identified only 1 study that reported on timing of diarrhea in relation to other COVID-19 related symptoms. In a study by Ai JW et al. of 102 hospitalized patients, 15 patients on hospital admission reported diarrhea symptoms and diarrhea was the first symptom in 2 patients.⁷⁶ In a study by Wang et al. of 138 consecutive hospitalized patients, not included in our pooled analysis, a total of 14 patients presented with diarrhea and nausea 1-2 days prior to the development of fever and dyspnea.⁷⁷ **See Supplement Figure 5**

Nausea/Vomiting

A total of 26 studies including 5955 patients with COVID-19 (confirmed by laboratory RT-PCR testing), were included in the overall analysis for nausea and/or vomiting.^{20, 22, 23, 25, 27, 29, 34, 37, 41, 45-47, 50, 51, 54, 55, 59, 63, 65, 67, 68, 70-73, 76} The pooled prevalence of nausea/vomiting was 7.8% (95% CI 7.1 to 8.5). A subgroup analysis of 1901 patients from 7 studies (including patients from Germany, Singapore, USA, Australia, and the Netherlands) demonstrated a higher pooled prevalence of 14.9% (95% CI 13.3 to 16.6).^{37, 46, 47, 59, 63, 68, 70} This is in comparison to the prevalence of symptoms in studies from China which was 5.2% (95% CI:4.4 to 5.9). See **Figure 2 and Supplement Figure 7.**

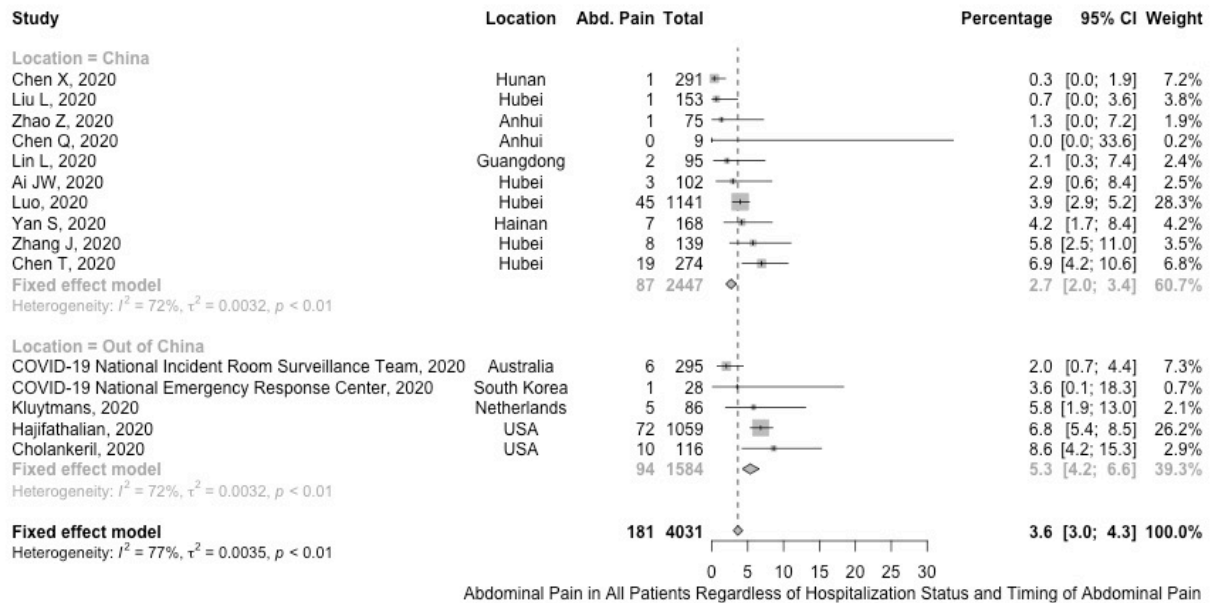
Figure 2. Forest plot of the prevalence of nausea/vomiting in all patients



Abdominal Pain

A total of 15 studies including 4031 COVID-19 patients (confirmed by laboratory RT-PCR testing) were included in the overall analysis for abdominal pain.^{21, 23, 27, 37, 50, 54, 55, 59, 63, 69-73, 76} The pooled prevalence of abdominal pain was 3.6% (95% CI 3.0 to 4.3). A subgroup analysis of 1584 patients from USA, Australia, South Korea, and the Netherlands, demonstrated a slightly higher pooled prevalence of 5.3% (95% CI 4.2 to 6.6) when compared with studies from China 2.7% (95% CI 2.0 to 3.4) which included 10 studies of 2447 patients.^{37, 59, 63, 69, 70} The symptoms were variably described as stomachache, epigastric pain, and abdominal discomfort without further details regarding the quality or nature of pain. See **Figure 3** and **Supplement Figure 7**.

Figure 3. Forest plot of the prevalence of abdominal pain in all patients



Stool shedding

Our study selection criteria prioritized including studies with diarrhea as a GI manifestation and avoiding overlap in populations, and therefore did not include a comprehensive set of studies reporting on stool shedding. A recently published systematic review by Cheung et al. found a 48.1% (95% CI: 38.3%-59.7%) pooled prevalence of stool samples positive for virus RNA in 12 studies.¹⁰ Stool RNA was positive in 70.3% of samples taken from patients after respiratory specimens were no longer positive for the virus.

From the 57 studies included in our analysis, 4 studies reported on presence of viral RNA in stool.^{24, 32, 57, 68} Of these, 3 studies were published after the SR by Cheung et al. First, Dreher et al conducted a retrospective cohort study in Germany, stratifying patients by presence of ARDS. In this study, 8/50 patients had diarrhea, and stool PCR was positive in 15/50 patients.⁶⁸ In a US study by Kujawski et al., stool PCR was positive in 7/10 patients.⁵⁷ Finally, in a case series from Germany by Wolfel et al, the authors not only examined stool RNA but also tried to isolate virus from lab specimens. In this study, 2/9 patients had diarrhea as an initial symptom and stool PCR remained positive for up to 11 days but notably, the authors were unable to isolate infectious virus despite a high stool viral RNA load, even though the virus was successfully isolated from respiratory specimens. The authors concluded that stool is not a primary source of spread of infection.³² Conversely, in a letter published by Wang et al., the authors collected 1070 specimens from 205 hospitalized patients with COVID-19 and 44/153

(29%) stool specimens were positive for viral RNA. Four specimens with high copy numbers were cultured and electron microscopy was performed to detect live virus which was observed in the stool from 2 patients who did not have diarrhea. The authors concluded that although this does not confer infectivity, it raised the possibility of fecal-oral transmission.⁷⁸ The small sample size of the reports that assessed the presence of live virus in stool combined with the conflicting findings limit our certainty in the evidence and thus the question of fecal-oral transmission remains unsettled.

2.What are the liver manifestations of COVID-19?

Based on our inclusion strategy, 32 out of the 57 studies (56%) reported any data on liver abnormalities.^{20-22, 25, 27, 28, 30, 34, 36, 38, 41-43, 45, 48-53, 55, 57, 60, 61, 63, 65-67, 70-72, 75, 76} The majority of the studies that reported data on LFTs only reported continuous summary statistics (median and IQR) without reporting the number of patients with abnormal levels. Abnormal AST, defined as any value above the ULN, was reported in 15.0% (95% CI 13.6 to 16.5) of patients across 16 studies including 2514 COVID-19 patients. Abnormal ALT, defined as any value above the ULN, was reported in 15.0% (95% CI 13.6 to 16.4) of patients across 17 studies including 2711 COVID-19 patients. Abnormal bilirubin, defined as any value above the ULN, was reported in 16.7% (95% CI 15.0 to 18.5) of patients across 10 studies including 1841 COVID-19 patients. All patients had confirmed COVID-19 by laboratory RT-PCR testing.

The study by Cholankeril et al. reported that 26/65 (40%) patients had abnormal liver enzymes and 22 of them had normal baseline liver enzymes.⁷⁰ None of the remaining studies provided any information regarding the status of LFTs prior to the infection. One study by Fu H et al. reported summary statistics (median and IQR) of LFTs for 23 patients on admission and discharge with clinically important changes. However, they did not provide the number of patients who presented with normal or abnormal LFTs and how many of them improved or worsened.⁶⁵ None of the included studies reported the work-up of LFTs in the settings of COVID-19 or assessed if they were related to alternative etiologies, especially medications. Thirteen studies reported on the association between the presence of liver injury at presentation and severity of disease or outcomes. Most of them reported the results of univariate analyses.^{20, 22, 27, 38, 45, 48, 51, 53, 55, 63, 67, 71, 72} The study by Hajifathalian et al. reported the results of multivariate analyses that included multiple variables and showed liver injury at presentation was associated with high risk for admission as well as higher risk of ICU admission and/or death as a composite outcome.⁶³ See **Supplement Figures 9-11**.

Rationale for Best Practice Statements

1. In outpatients with new onset diarrhea, (i) ascertain information about high risk contact exposure (ii) obtain a detailed history of symptoms associated with COVID-19, including fever, cough, shortness of breath, chills, muscle pain, headache, sore throat, or new loss of taste or smell (iii) obtain a thorough history for other GI symptoms, including nausea, vomiting, and abdominal pain.

2. In outpatients with new onset GI symptoms (e.g., nausea, vomiting, abdominal pain, diarrhea), monitor for symptoms associated with COVID-19 as GI symptoms may precede COVID-related symptoms by a few days. In a high COVID-19 prevalence setting, COVID-19 testing should be considered.

3. In hospitalized patients with suspected or known COVID-19, obtain a thorough history of GI symptoms (nausea, vomiting, abdominal pain, diarrhea) including onset, characteristics, duration, and severity.

The overall prevalence of GI symptoms in context of COVID-19, including nausea, vomiting, abdominal pain, and diarrhea, is lower than previously estimated.¹⁰ It is important to note that the majority of studies were focused on hospitalized patients with COVID-19, and the prevalence of diarrhea in patients with mild symptoms who were not hospitalized is not known. Therefore, the reported prevalence rates may represent either an overestimate or underestimate. Information about the frequency and severity of diarrhea symptoms was inadequately reported in the majority of studies.

Based on our analysis, among hospitalized patients, diarrhea as the only presenting symptom in the absence of other COVID-related symptoms was very low. The majority of patients with diarrhea, nausea or vomiting also presented with accompanying symptoms typically associated with COVID-19. In a handful of studies, diarrhea and nausea preceded the development of other COVID-19 related symptoms. In a US case-control study of 278 COVID-19 patients, patients with GI symptoms were more likely to have illness duration of ≥ 1 week (33%) compared to patients without GI symptoms (22%). This may have been attributable to a delay in testing.⁴⁷ Therefore, in high prevalence settings, among patients presenting with new onset diarrhea, monitoring for the development of COVID-19 symptoms and considering referring patients for COVID-testing is reasonable especially if testing capacity is not limited.

The CDC has recently expanded the criteria for COVID-19 testing to include presence of olfactory and gustatory symptoms as triggers for testing, as these symptoms have been demonstrated to occur in up to 80% of patients.⁷⁹ Diarrhea as an initial preceding symptom of COVID-19 has not been included on the CDC symptom checklist.

To more accurately inform our understanding of the true prevalence of diarrhea, nausea and vomiting as a manifestation of COVID-19, it is critical to systematically collect information about onset of diarrhea, duration of symptoms and documentation of whether and how long symptoms of diarrhea, nausea and vomiting precede URI symptoms. Therefore, we advise health care professionals and researchers to obtain a thorough review of systems, systematically inquire about respiratory and GI symptoms and ascertain information about exposure.

4. There is presently inadequate evidence to support stool testing for diagnosis or monitoring of COVID-19 as part of routine clinical practice.

While stool shedding has been reported in a prior meta-analysis in 48.1% of specimens, 2 small case series showed conflicting findings about the presence of living virus in stool.^{10, 32, 78} Therefore, stool infectivity and transmission have not been confirmed. Further studies are needed to determine whether isolated virus from stool specimens confers infectivity and determine the role of stool testing is in patients with COVID-19.

5. In patients (outpatients or inpatients) with elevated LFTs in context of suspected or known COVID-19, evaluate for alternative etiologies.

6. In hospitalized patients with suspected or known COVID-19, obtain baseline LFTs at the time of admission, and consider LFT monitoring throughout the hospitalization, particularly in the context of drug treatment for COVID-19.

7. In hospitalized patients undergoing drug treatment for COVID-19, evaluate for treatment-related GI and hepatic adverse effects.

Abnormal LFTs were reported in approximately 15% of patients across the pooled studies but with variable reporting of mean or median values for the whole sample of patients. While the studies used in this analysis helped us to better understand the prevalence of abnormal LFTs among hospitalized patients, LFT abnormalities were not consistently reported across studies. Also, many of the studies in this analysis did not report on how many patients had underlying liver disease and if these patients were at an elevated risk of having increased LFTs in the setting of COVID-19 infection. Furthermore, diagnostic evaluation of abnormal LFTs on admission was not routinely performed, such as testing for viral hepatitis or other etiologies. The available studies suggest that abnormal LFTs are more commonly attributable to secondary effects (e.g., systemic inflammatory response syndrome, cytokine storm, ischemic hepatitis/shock, sepsis, drug hepatotoxicity) than primary virus-mediated hepatocellular injury.^{7, 9, 80} However, liver histopathology from patients with COVID-19 have revealed mild lobular and portal inflammation and microvesicular steatosis suggestive of either virally

mediated or drug-induced liver injury.⁸¹ In addition, some studies have revealed that abnormal LFTs at hospital admission may be associated with a higher risk for severe COVID-19 (OR 2.73, 95% CI 1.19-6.3).⁹ Therefore, we advise checking baseline LFTs in all patients on admission and monitoring of LFTs throughout the hospitalization, particularly in patients undergoing drug therapy for COVID-19 associated with potential hepatotoxicity. We additionally advise that all patients with abnormal LFTs undergo an evaluation to investigate non-COVID-19 causes of liver disease.

3. What are common GI/liver adverse effects of COVID-19 treatments?

There are currently no FDA-approved routine treatments for COVID-19. The FDA has issued an emergency use authorization (EUA) for three therapies: chloroquine or hydroxychloroquine, remdesivir, and convalescent plasma.⁸² In China and Japan, favipiravir has been approved for the treatment of COVID-19. Numerous medications are under investigation currently; the World Health Organization is currently spearheading a multinational, multicenter trial for the five treatments highlighted below.⁸³ We aim to provide a summary of the GI and liver adverse effects of the most commonly utilized medications for COVID-19 at this time irrespective of their efficacy. Medication GI-related AEs are summarized in Supplement Table 1 and 2 (Direct Evidence Sources and Indirect Evidence Sources).

Table 3: GI Treatment Adverse Effects of Currently Utilized COVID-19 Therapies

Medication Type	Medication Name	Gastrointestinal AEs	Hepatic AEs	Major drug-drug interactions
Anti-malarial	Chloroquine	Nausea, vomiting, abdominal pain, and diarrhea reported; frequency not defined	<u>Likelihood score:</u> D (possible rare cause of clinically apparent liver injury) <u>Description:</u> Rare elevations in aminotransferases. Most reactions are hypersensitivity with no known cross reactivity to hepatic injury. If this occurs, reasonable to switch between chloroquine therapies	Substrate for CYP2D6 and CYP3A4 substrate
	Hydroxychloroquine			Same as above; also substrate for CYP3A5 and CYP2C8
Anti-viral	Remdesivir	Not reported (limited data available)	<u>Likelihood score:</u> Not scored <u>Description:</u> Hepatotoxicity reported; frequency not yet known	Not a significant inducer/inhibitor of CYP enzymes
	Lopinavir/ritonavir	<u>Nausea and vomiting:</u> 5-10% (higher in	<u>Likelihood score:</u> D (possible, rare cause of clinically apparent	<u>Substrate</u> for: CYP3A4, CYP2D6

		children: 20%) <u>Abdominal pain</u> : 1-10% <u>Diarrhea</u> : 10-30% + dose-dependent <u>Other</u> : dysgeusia in adults <2%, children: 25%, increased serum amylase, lipase: 3-8%	<u>liver injury</u>) <u>Description</u> : Hepatotoxicity ranges from mild elevations in aminotransferases to acute liver failure. Recovery takes 1-2 months. Re-challenging may lead to recurrence and should be avoided if possible.	P-gp <u>Inducer</u> for: CYP1A2, CYP2B6, CYP2C8, CYP2C9, CYP2C19, UGT1A1 <u>Inhibitor</u> for: CYP3A4
	Favipiravir	<u>Nausea/vomiting</u> : 5-15% <u>Diarrhea</u> : 5% Limited data available	<u>Likelihood score</u> : Not scored <u>Description</u> : 3% prevalence, but little data available	<u>Inhibitor</u> for: CYP2C8 and aldehyde oxidase Metabolized by xanthine oxidase and aldehyde oxidase

Anti-malarial medications:

Although efficacy and subsequent optimal dosing in COVID-19 is still under investigation, both chloroquine and hydroxychloroquine are currently FDA-approved in the U.S. for other indications (malaria, systemic lupus erythematosus) and now have an EUA for use in COVID-19.

Chloroquine & Hydroxychloroquine

Both chloroquines have reported infrequent GI (nausea, vomiting, abdominal pain, and diarrhea) adverse effects.^{84, 85} The National Institute of Health (NIH) LiverTox resource rates both drugs with Likelihood score of D (possible rare cause of clinically apparent liver injury).⁸⁶ Chloroquine is rarely linked to aminotransferase elevations or clinically apparent liver injury. In patients with acute intermittent porphyria or porphyria cutanea tarda, it can trigger a hypersensitivity attack with fever and serum aminotransferase elevations, sometimes resulting in jaundice. This is less commonly seen with hydroxychloroquine. Such reactions are felt to be hypersensitivity reactions and there is no known cross-reactivity in liver injury between hydroxychloroquine and chloroquine. Hydroxychloroquine is known to concentrate in the liver, thus patients with hepatitis or other hepatic diseases, or patients taking other known hepatotoxic drugs should exercise caution. Moreover, cardiac conduction defects leading to clinically relevant arrhythmias are an important adverse effect of these medications.

Anti-viral medications:

Remdesivir

Limited data regarding GI Aes are available, as phase III trials are still underway. Based on studies from Ebola, there have been reports of elevated transaminases, although the severity and incidence has not been quantified.⁸⁷ There is one published case series (n=53) on compassionate use of remdesivir in COVID-19.⁸⁸ In this study, the most common adverse effects were notably GI and hepatotoxicity. 5/9 (9%) of

patients experienced diarrhea, and 12/53 (23%) of patients had reported elevations in hepatic enzymes associated with remdesivir. Of the four patients (8%) who discontinued treatment prematurely, two of them were due to elevated aminotransferases.

Lopinavir/ritonavir

The combination lopinavir/ritonavir is FDA-approved for the treatment of Human Immunodeficiency Virus (HIV). More recently, it was utilized to treat MERS and SARS. There is one trial by Cao et al which randomized 199 hospitalized patients with severe COVID-19 to receive treatment to lopinavir/ritonavir (n=99) or placebo (n=100) for 14 days⁸⁹ GI adverse events were most common among those in the treatment group, and were the primary reason for medication discontinuation; of patients receiving lopinavir/ritonavir, there were 9.5% (9/99) with nausea, 6.3% (6/99) with vomiting, 4.2% (4/99) with diarrhea, 4.2% (4/99) with abdominal discomfort, 4.2% (4/99) with reported stomach ache, and 4.2% (4/99) with diarrhea. Additionally, there were two serious adverse events of acute gastritis, which both lead to drug discontinuation. When lopinavir/ritonavir is used in patients with HIV, diarrhea is the most common GI AE (10-30%), greater prevalence among those receiving higher dose. Other GI AEs in HIV are similar to the Cao RCT, with nausea in 5-15% and vomiting in 5-10% of patients⁹⁰ See **Table 3**.

The Cao et al. RCT did not show a significant increase in hepatotoxicity in the treatment compared to the control group.⁸⁹ However, in patients with HIV, there is a well-documented known risk of hepatotoxicity, with liver injury severity ranging from mild enzyme elevations to acute liver failure.⁹¹ Moderate-to-severe elevations in serum aminotransferases, defined as more than five times the upper limit of normal, are found in 3-10%.⁹¹ Rates may be higher in patients with concurrent HIV and HCV co-infection. In some cases, mild, asymptomatic elevations are self-limited and can resolve with continuation of the medication, but re-challenging the medication may also lead to recurrence, and therefore, should be avoided when possible. Acute liver failure, although reported, is rare. Ritonavir has potent effects on cytochrome P450 and therefore affects drug levels of a large number of medications typically given in GI practices.

Favipiravir

There are two published studies on favipiravir in COVID-19. The first is an open-label RCT for favipiravir vs arbidol conducted in Wuhan, China by Chen 2020. This study reported digestive tract reactions including nausea, "anti-acid" or flatulence in 13.79% (16/116) of the favipiravir group. Hepatotoxicity characterized by any elevation in AST or ALT was reported in 7.76% (9/116). The second is an open-label control study of favipiravir or lopinavir/ritonavir, both used in conjunction with interferon-alpha, for COVID-19 by Cai et al, reported diarrhea in 5.7% (2/35) and liver injury in 2.9% (1/35).⁹² See Supplement Tables 1 and 2.

III. Limitations of the Evidence on GI and Liver Manifestations in Patients with COVID-19 Infection

The individual studies in our analysis were at high risk of bias. The majority of studies reported on cohorts of patients based on inclusion dates and did not specify if these were consecutive patients. There was an inconsistent assessment of symptoms and/or laboratory tests with missing data, and none of the studies reported if patients were systematically evaluated for GI symptoms on admission. Most studies did not report on the duration of the GI symptoms preceding the presentation. When GI symptoms were reported, it was difficult to discern if these were isolated symptoms or if patients had also had concurrent typical COVID-19 symptoms (e.g., fever cough, SOB). LFTs were mostly reported as the mean/median value of the entire cohort and without cut-off values for the institution. Many of the studies did not report on underlying chronic GI or liver diseases. There was a lot of heterogeneity in our pooled estimates that could not be explained by our subgroup analysis based on geographic location. Lastly, the data on prognosis was especially difficult to analyze due to insufficient follow up of the patients (the majority of the patients were still hospitalized at the time of publication). Finally, there was no stratification of GI-related symptoms and severity of COVID-19 or patient important outcomes, such as need for ICU or survival.

There may be additional limitations of our findings based on our analysis. Due to concerns about overlapping cohorts, we used a hierarchical framework to identify unique cohorts based on the number of patients and the hospitals to analyze the prevalence of GI and liver symptoms. It is possible that we excluded relevant studies that provided more granularity regarding the GI and liver manifestations or had more rigorous methodology which may lead to an over or underestimation of the pooled effect estimates. However, we have high confidence that we were able to eliminate the counting of some patients in more than one report by using our selection framework, unless they were transferred from one hospital to another. An important strength of this study is the appropriate statistical analysis used to pool proportions. We also reviewed grey literature from pre-publication repositories which allowed us to include a large number of studies that have not been published yet, with data from a total of 10,890 unique COVID-19 patients being included in this work. Lastly, we tried to narratively describe studies that informed us on (i) the type of diarrhea symptoms (ii) whether diarrhea was reported as the only presenting symptom or (iii) diarrhea as the initial symptom that preceded other symptoms. Based on our study selection process, we may have missed studies, including smaller case series that reported on this information, and studies that were published after our inclusion period, in light of the exponential number of studies in press, under review, and on pre-print servers.

Limitations of current evidence on Treatment-related Adverse Effects

Most of the information regarding GI Aes come from indirect evidence from medications that are FDA approved for other indications, such as the chloroquines and lopinavir/ritonavir. In particular, GI Aes are poorly understood for both favipiravir and remdesivir, including the frequency and severity of aminotransferase elevations, and incidence of GI manifestations. As ongoing clinical trials complete regarding efficacy of therapy, additional data regarding GI Aes will emerge.

Evidence Gaps and Guidance for Research

Currently there is insufficient evidence on the impact of COVID-19 on subgroups of patients, such as patients with inflammatory bowel disease, chronic liver disease, or liver transplant recipients on chronic immunosuppression. Early data do not indicate excess risk among patients with IBD.⁹³⁻⁹⁷ A number of international registries have been established that will provide extremely valuable information about COVID-19 in these potentially vulnerable populations (www.covidibd.org; covidcirrhosis.web.unc.edu; www.gi-covid19.org). Other clinical decisions including optimal medication management and treatment decisions are still under investigation. We encourage clinicians to contribute to these registries to further enhance understanding in these subpopulations. Table 4 provides guidance for future studies of GI manifestations in patients with COVID-19 or other similar pathogens.

Finally, peer-review remains critical to the process of disseminating information. Journals should add resources to expedite reviews by increasing the number of editors and reviewers, shorten the review process, to maintain accuracy, high quality and details of the data reported, as well as to avoid overlap in patients between studies or multiple studies being published on the same cohort.⁹⁸

Table 4. Guidance and research considerations for future studies of COVID-19

Study design	<ul style="list-style-type: none"> - A prospective inception cohort study is a favorable study design. - Another study design that is informative especially when there is a need for rapid data evaluation is a retrospective inception cohort study.
Participants	<ul style="list-style-type: none"> - Enrollment of consecutive patients beginning at pandemic onset. - Specific set of symptoms that are predictive of COVID-19 infection, all symptoms should be systematically collected on presentation and before COVID-19 diagnosis is established. <ul style="list-style-type: none"> • Elicit typical URI symptoms (e.g., cough, shortness of breath, chest pain, fever) • Inquire about less typical symptoms, such as GI specific symptoms: diarrhea, nausea, vomiting, and abdominal pain, and also other symptoms such as anosmia, dysguesia • Describe the GI symptoms in details including initial versus late, concurrent vs. isolated, duration and frequency, prior history, and medication initiation relating to the onset of symptoms. - Investigators should avoid: <ul style="list-style-type: none"> • Undefined sampling (convenience sampling), including undefined time periods. • Overlap of the same population with other publications, which can be done by coordinating efforts between the different departments within the institution. - Investigators should consider stratification for GI comorbidities such as IBD, cirrhosis. - Investigators should consider stratification by outpatients versus inpatients
Laboratory	<ul style="list-style-type: none"> -Standardized laboratory-confirmation should be based on NAT (nucleic acid testing) for SARS-CoV-2 on respiratory specimen rather than relying on radiological suspicion on imaging studies which are less specific - Liver function tests (LFTs) should be obtained on admission and followed throughout the hospitalization. - Changes of LFTs should be reported as normal/abnormal and the cut-off for abnormal should be specified, rather than mean and median at the individual patient level. - The pattern of LFTs abnormalities, hepatocellular vs cholestatic, should be reported as well as the evaluation performed to work-up the abnormalities. - When available, LFTs prior to the development of the disease (baseline LFTs) should be reported, and how they changed with the diagnosis of the disease and after the resolution of it should be accounted for. - Report stool RNA testing, when available, and presence of GI symptoms at the time of testing

Disease severity	<p>- Use of standardized disease severity definitions, for example as per WHO-China Joint Mission⁹⁹:</p> <ul style="list-style-type: none"> • mild-to-moderate: non-pneumonia and mild pneumonia • severe defined as tachypnoea₂, oxygen saturation $\leq 93\%$ at rest, or PaO₂/FiO₂ ratio < 300 mm Hg • critical respiratory failure requiring mechanical ventilation, septic shock, or other organ dysfunction or failure that requires intensive care <p>- Patients can be stratified by:</p> <ul style="list-style-type: none"> • Disease severity and presence of GI symptoms • Disease severity and LFTs <p>- Symptoms and their duration prior to development of a severe stage of the disease should be reported.</p>
Outcomes	<p>Outcomes should focus on patient-important outcomes such as death, clinical improvement or disease worsening/ progression, hospital discharge; included reproducible clinical definitions (e.g., threshold reached for intubation); select sufficient follow up time to ensure outcome is obtainable.</p>
Analysis	<p>Analysis should attempt to control for confounding variables; analysis of risk factors should include univariate followed by multivariate analysis to identify independent risk factors predicting more severe disease and poor outcomes</p>

*In the table, we specifically refer to COVID-19 but this guidance applies to any future pathogen similar to COVID-19 that presents as a viral illness with potential GI and liver manifestations.

Update

Recommendations in this document may not be valid in the near future. We will conduct periodic reviews of the literature and monitor the evidence to determine if recommendations require modification. Based on the rapidly evolving nature of this pandemic, this guideline will likely need to be updated within the next few months.

Conclusions

The global COVID-19 pandemic due to SARS-CoV-2 infection is associated with significant morbidity and mortality due to severe pneumonia, acute respiratory distress syndrome (ARDS), and multiorgan failure. Although fever, cough, and shortness of breath remain the most common presenting complaints in affected individuals, emerging data suggest that non-pulmonary symptoms affecting the GI tract and liver may be observed. Based on systematic review and meta-analysis of 47 studies and 10,890 unique patients, gastrointestinal symptoms (nausea, vomiting, abdominal pain, diarrhea) are observed in fewer than 10% of patients with COVID-19, and abnormal liver enzymes (AST, ALT, bilirubin) are observed in approximately 15-20% of patients with COVID-19. These findings inform time-sensitive clinical guidance in context of this pandemic to pursue careful evaluation of patients with new-onset gastrointestinal

complaints for classic and atypical symptoms of COVID-19. All hospitalized patients with COVID-19 may benefit from liver enzyme monitoring, particularly in context of drug treatment with known hepatotoxic potential. Further research is needed to further clarify the implications of SARS-CoV-2 in stool and potential impact on transmission and clinical management.

References:

1. Lu R, Zhao X, Li J, et al. Genomic characterisation and epidemiology of 2019 novel coronavirus: implications for virus origins and receptor binding. *Lancet* 2020;395:565-574.
2. Huang C, Wang Y, Li X, et al. Clinical features of patients infected with 2019 novel coronavirus in Wuhan, China. *Lancet* 2020;395:497-506.
3. Dong E, Du H, Gardner L. An interactive web-based dashboard to track COVID-19 in real time. *Lancet Infect Dis* 2020.
4. Team CC-R. Severe Outcomes Among Patients with Coronavirus Disease 2019 (COVID-19) - United States, February 12-March 16, 2020. *MMWR Morb Mortal Wkly Rep* 2020;69:343-346.
5. Richardson S, Hirsch JS, Narasimhan M, et al. Presenting Characteristics, Comorbidities, and Outcomes Among 5700 Patients Hospitalized With COVID-19 in the New York City Area. *JAMA* 2020.
6. Xiao F, Tang M, Zheng X, et al. Evidence for Gastrointestinal Infection of SARS-CoV-2. *Gastroenterology* 2020.
7. Zhang C, Shi L, Wang FS. Liver injury in COVID-19: management and challenges. *Lancet Gastroenterol Hepatol* 2020;5:428-430.
8. Xu L, Liu J, Lu M, et al. Liver injury during highly pathogenic human coronavirus infections. *Liver Int* 2020.
9. Cai Q, Huang D, Yu H, et al. Characteristics of Liver Tests in COVID-19 Patients. *J Hepatol* 2020.
10. Cheung KS, Hung IF, Chan PP, et al. Gastrointestinal Manifestations of SARS-CoV-2 Infection and Virus Load in Fecal Samples from the Hong Kong Cohort and Systematic Review and Meta-analysis. *Gastroenterology* 2020.
11. Chen Q, Allot A, Lu Z. Keep up with the latest coronavirus research. *Nature* 2020;579:193.
12. Bauchner H, Golub RM, Zylke J. Editorial Concern-Possible Reporting of the Same Patients With COVID-19 in Different Reports. *JAMA* 2020.
13. Schunemann HJ, Cuello C, Akl EA, et al. GRADE guidelines: 18. How ROBINS-I and other tools to assess risk of bias in nonrandomized studies should be used to rate the certainty of a body of evidence. *J Clin Epidemiol* 2019;111:105-114.
14. Sultan S, Falck-Ytter Y, Inadomi JM. The AGA institute process for developing clinical practice guidelines part one: grading the evidence. *Clin Gastroenterol Hepatol* 2013;11:329-32.
15. Balduzzi S, Rucker G, Schwarzer G. How to perform a meta-analysis with R: a practical tutorial. *Evid Based Ment Health* 2019;22:153-160.
16. R Core Team. R: A language and environment for statistical computing: R Foundation for Statistical Computing, Vienna, Austria, 2020.
17. Barendregt JJ, Doi SA, Lee YY, et al. Meta-analysis of prevalence. *J Epidemiol Community Health* 2013;67:974-8.
18. Murad MH, Sultan S, Haffar S, et al. Methodological quality and synthesis of case series and case reports. *BMJ Evid Based Med* 2018;23:60-63.
19. Higgins JP, Thompson SG, Deeks JJ, et al. Measuring inconsistency in meta-analyses. *BMJ* 2003;327:557-60.
20. Zhou F, Yu T, Du R, et al. Clinical course and risk factors for mortality of adult inpatients with COVID-19 in Wuhan, China: a retrospective cohort study. *Lancet* 2020;395:1054-1062.

21. Zhao Z, Xie J, Yin M, et al. Clinical and Laboratory Profiles of 75 Hospitalized Patients with Novel Coronavirus Disease 2019 in Hefei, China. medRxiv 2020:2020.03.01.20029785.
22. Zhao W, Yu S, Zha X, et al. Clinical characteristics and durations of hospitalized patients with COVID-19 in Beijing: a retrospective cohort study. medRxiv 2020:2020.03.13.20035436.
23. Zhang JJ, Dong X, Cao YY, et al. Clinical characteristics of 140 patients infected with SARS-CoV-2 in Wuhan, China. Allergy 2020.
24. Young BE, Ong SWX, Kalimuddin S, et al. Epidemiologic Features and Clinical Course of Patients Infected With SARS-CoV-2 in Singapore. JAMA 2020.
25. Yao N, Wang SN, Lian JQ, et al. [Clinical characteristics and influencing factors of patients with novel coronavirus pneumonia combined with liver injury in Shaanxi region]. Zhonghua Gan Zang Bing Za Zhi 2020;28:E003.
26. Yang P, Ding Y, Xu Z, et al. Epidemiological and clinical features of COVID-19 patients with and without pneumonia in Beijing, China. medRxiv 2020:2020.02.28.20028068.
27. Yan S, Song X, Lin F, et al. Clinical Characteristics of Coronavirus Disease 2019 in Hainan, China. medRxiv 2020:2020.03.19.20038539.
28. Xu Y, Xu Z, Liu X, et al. Clinical findings in critical ill patients infected with SARS-Cov-2 in Guangdong Province, China: a multi-center, retrospective, observational study. medRxiv 2020:2020.03.03.20030668.
29. Xu X, Yu C, Qu J, et al. Imaging and clinical features of patients with 2019 novel coronavirus SARS-CoV-2. Eur J Nucl Med Mol Imaging 2020;47:1275-1280.
30. Xu S, Fu L, Fei J, et al. Acute kidney injury at early stage as a negative prognostic indicator of patients with COVID-19: a hospital-based retrospective analysis. medRxiv 2020:2020.03.24.20042408.
31. Xu H, Yan L, Qiu C, et al. Analysis and Prediction of False Negative Results for SARS-CoV-2 Detection with Pharyngeal Swab Specimen in COVID-19 Patients: A Retrospective Study. medRxiv 2020:2020.03.26.20043042.
32. Wolfel R, Corman VM, Guggemos W, et al. Virological assessment of hospitalized patients with COVID-2019. Nature 2020.
33. Wen Y, Wei L, Li Y, et al. Epidemiological and clinical characteristics of COVID-19 in Shenzhen, the largest migrant city of China. medRxiv 2020:2020.03.22.20035246.
34. WEI L, JIN D, ZHANG J, et al. Clinical findings of 100 Mild Cases of COVID-19 in Wuhan:A descriptive study. SSRN 2020:3551332.
35. Wang L, Gao YH, Lou LL, et al. The clinical dynamics of 18 cases of COVID-19 outside of Wuhan, China. Eur Respir J 2020;55.
36. Tian S, Chang Z, Wang Y, et al. Clinical characteristics and reasons of different duration from onset to release from quarantine for patients with COVID-19 Outside Hubei province, China. medRxiv 2020:2020.03.21.20038778.
37. Team C-NIRS. COVID-19, Australia: Epidemiology Report 7 (Reporting week ending 19:00 AEDT 14 March 2020). Commun Dis Intell (2018) 2020;44.
38. Tabata S, Imai K, Kawano S, et al. The clinical characteristics of COVID-19: a retrospective analysis of 104 patients from the outbreak on board the Diamond Princess cruise ship in Japan. medRxiv 2020:2020.03.18.20038125.
39. Sun Y, Koh V, Marimuthu K, et al. Epidemiological and Clinical Predictors of COVID-19. Clin Infect Dis 2020.
40. Spiteri G, Fielding J, Diercke M, et al. First cases of coronavirus disease 2019 (COVID-19) in the WHO European Region, 24 January to 21 February 2020. Euro Surveill 2020;25.
41. Shu L, Wang X, Li M, et al. Clinical Characteristics of 545 Cases Confirmed COVID-19 in Wuhan Stadium Cabin Hospital. SSRN 2020:3552844.

42. Shi S, Qin M, Shen B, et al. Association of Cardiac Injury With Mortality in Hospitalized Patients With COVID-19 in Wuhan, China. *JAMA Cardiol* 2020.
43. Rubin SJS, Falkson SR, Degner N, et al. Clinical characteristics associated with COVID-19 severity in California. *Journal of Clinical and Translational Science* 2020:1-9.
44. Qian GQ, Yang NB, Ding F, et al. Epidemiologic and Clinical Characteristics of 91 Hospitalized Patients with COVID-19 in Zhejiang, China: A retrospective, multi-centre case series. *QJM* 2020.
45. Qi D, Yan X, Tang X, et al. Epidemiological and clinical features of 2019-nCoV acute respiratory disease cases in Chongqing municipality, China: a retrospective, descriptive, multiple-center study. *medRxiv* 2020:2020.03.01.20029397.
46. Pung R, Chiew CJ, Young BE, et al. Investigation of three clusters of COVID-19 in Singapore: implications for surveillance and response measures. *Lancet* 2020;395:1039-1046.
47. Nobel YR, Phipps M, Zucker J, et al. Gastrointestinal Symptoms and COVID-19: Case-Control Study from the United States. *Gastroenterology* 2020.
48. Mao L, Wang M, Chen S, et al. Neurological Manifestations of Hospitalized Patients with COVID-19 in Wuhan, China: a retrospective case series study. *medRxiv* 2020:2020.02.22.20026500.
49. Ma L, Xie W, Li D, et al. Effect of SARS-CoV-2 infection upon male gonadal function: A single center-based study. *medRxiv* 2020:2020.03.21.20037267.
50. Luo S, Zhang X, Xu H. Don't Overlook Digestive Symptoms in Patients With 2019 Novel Coronavirus Disease (COVID-19). *Clin Gastroenterol Hepatol* 2020.
51. Lu H, Ai J, Shen Y, et al. A descriptive study of the impact of diseases control and prevention on the epidemics dynamics and clinical features of SARS-CoV-2 outbreak in Shanghai, lessons learned for metropolis epidemics prevention. *medRxiv* 2020:2020.02.19.20025031.
52. Liu Y, Sun W, Li J, et al. Clinical features and progression of acute respiratory distress syndrome in coronavirus disease 2019. *medRxiv* 2020:2020.02.17.20024166.
53. Liu S, Luo H, Wang Y, et al. Characteristics and Associations with Severity in COVID-19 Patients: A Multicentre Cohort Study from Jiangsu Province, China. *SSRN* 2020:3548753.
54. Liu L, Liu W, Wang S, et al. A preliminary study on serological assay for severe acute respiratory syndrome coronavirus 2 (SARS-CoV-2) in 238 admitted hospital patients. *medRxiv* 2020:2020.03.06.20031856.
55. Lin L, Jiang X, Zhang Z, et al. Gastrointestinal symptoms of 95 cases with SARS-CoV-2 infection. *Gut* 2020.
56. Li K, Wu J, Wu F, et al. The Clinical and Chest CT Features Associated with Severe and Critical COVID-19 Pneumonia. *Invest Radiol* 2020.
57. Kujawski SA, Wong KK, Collins JP, et al. First 12 patients with coronavirus disease 2019 (COVID-19) in the United States. *medRxiv* 2020:2020.03.09.20032896.
58. Kuang Y, Zhang H, Zhou R, et al. Epidemiological and Clinical Characteristics of 944 Cases of 2019 Novel Coronavirus Infection of Non-COVID-19 Exporting City, Zhejiang, China. *SSRN* 2020:3543604.
59. Kluytmans M, Buiting A, Pas S, et al. SARS-CoV-2 infection in 86 healthcare workers in two Dutch hospitals in March 2020. *medRxiv* 2020:2020.03.23.20041913.
60. Jin X, Lian JS, Hu JH, et al. Epidemiological, clinical and virological characteristics of 74 cases of coronavirus-infected disease 2019 (COVID-19) with gastrointestinal symptoms. *Gut* 2020.
61. Huang Y, Yang R, Xu Y, et al. Clinical characteristics of 36 non-survivors with COVID-19 in Wuhan, China. *medRxiv* 2020:2020.02.27.20029009.

62. Han R, Huang L, Jiang H, et al. Early Clinical and CT Manifestations of Coronavirus Disease 2019 (COVID-19) Pneumonia. *AJR Am J Roentgenol* 2020:1-6.
63. Hajifathalian K, Krisko T, Mehta A, et al. Gastrointestinal and Hepatic Manifestations of 2019 Novel Coronavirus Disease in a Large Cohort of Infected Patients From New York: Clinical Implications for Prognosis. *Gastroenterology* 2020.
64. Gritti G, Raimondi F, Ripamonti D, et al. Use of siltuximab in patients with COVID-19 pneumonia requiring ventilatory support. *medRxiv* 2020:2020.04.01.20048561.
65. Fu H, Xu H, Zhang N, et al. Association between Clinical, Laboratory and CT Characteristics and RT-PCR Results in the Follow-up of COVID-19 patients. *medRxiv* 2020:2020.03.19.20038315.
66. Fu H, Li H, Tang X, et al. Analysis on the Clinical Characteristics of 36 Cases of Novel Coronavirus Pneumonia in Kunming. *medRxiv* 2020:2020.02.28.20029173.
67. Fan L, Liu C, Li N, et al. Medical treatment of 55 patients with COVID-19 from seven cities in northeast China who fully recovered: a single-center, retrospective, observational study. *medRxiv* 2020:2020.03.28.20045955.
68. Dreher M, Kersten A, Bickenbach J, et al. Charakteristik von 50 hospitalisierten COVID-19-Patienten mit und ohne ARDS. *Dtsch Arztebl International* 2020;117:271-8.
69. Covid-19 National Emergency Response Center E, Case Management Team KCfDC, Prevention. Early Epidemiological and Clinical Characteristics of 28 Cases of Coronavirus Disease in South Korea. *Osong Public Health Res Perspect* 2020;11:8-14.
70. Cholankeril G, Podboy A, Aivaliotis VI, et al. High Prevalence of Concurrent Gastrointestinal Manifestations in Patients with SARS-CoV-2: Early Experience from California. *Gastroenterology* 2020.
71. Chen X, Zheng F, Qing Y, et al. Epidemiological and clinical features of 291 cases with coronavirus disease 2019 in areas adjacent to Hubei, China: a double-center observational study. *medRxiv* 2020:2020.03.03.20030353.
72. Chen T, Wu D, Chen H, et al. Clinical characteristics of 113 deceased patients with coronavirus disease 2019: retrospective study. *BMJ* 2020;368:m1091.
73. Chen Q, Quan B, Li X, et al. A report of clinical diagnosis and treatment of nine cases of coronavirus disease 2019. *J Med Virol* 2020.
74. Chen D, Li X, Song Q, et al. Hypokalemia and Clinical Implications in Patients with Coronavirus Disease 2019 (COVID-19). *medRxiv* 2020:2020.02.27.20028530.
75. Arentz M, Yim E, Klaff L, et al. Characteristics and Outcomes of 21 Critically Ill Patients With COVID-19 in Washington State. *JAMA* 2020.
76. Ai J, Chen J, Wang Y, et al. The cross-sectional study of hospitalized coronavirus disease 2019 patients in Xiangyang, Hubei province. *medRxiv* 2020:2020.02.19.20025023.
77. Wang D, Hu B, Hu C, et al. Clinical Characteristics of 138 Hospitalized Patients With 2019 Novel Coronavirus-Infected Pneumonia in Wuhan, China. *JAMA* 2020.
78. Wang W, Xu Y, Gao R, et al. Detection of SARS-CoV-2 in Different Types of Clinical Specimens. *JAMA* 2020.
79. Center for Disease Control and Prevention. Symptoms of Coronavirus. Available at: <https://www.cdc.gov/coronavirus/2019-ncov/symptoms-testing/symptoms.html> [Accessed April 29, 2020].
80. Fan Z, Chen L, Li J, et al. Clinical Features of COVID-19-Related Liver Damage. *Clin Gastroenterol Hepatol* 2020.
81. Xu Z, Shi L, Wang Y, et al. Pathological findings of COVID-19 associated with acute respiratory distress syndrome. *Lancet Respir Med* 2020;8:420-422.
82. U.S. Food & Drug Administration. Coronavirus Disease 2019 (COVID-19). Available at: <https://www.fda.gov/emergency-preparedness-and-response/counterterrorism-and-emerging-threats/coronavirus-disease-2019-covid-19> [Accessed April 24, 2020].

83. World Health Organization. "Solidarity" clinical trial for COVID-19 treatments. Available at: <https://www.who.int/emergencies/diseases/novel-coronavirus-2019/global-research-on-novel-coronavirus-2019-ncov/solidarity-clinical-trial-for-covid-19-treatments> [Accessed April 01, 2020].
84. Aralen (chloroquine phosphate) [prescribing information]. Bridgewater, NJ: Sanofi-Aventis US LLC: October 2018. Available at: https://www.accessdata.fda.gov/drugsatfda_docs/label/2018/006002s045lbl.pdf [Accessed April 10, 2020]
85. Plaquenil (hydroxychloroquine) [product monograph]. Laval, Quebec, Canada: Sanofi-aventis Canada Inc; August 2019. Available at: https://www.accessdata.fda.gov/drugsatfda_docs/label/2007/009768s041lbl.pdf [Accessed April 12, 2020].
86. Chloroquine. LiverTox: Clinical and Research Information on Drug-Induced Liver Injury. Bethesda (MD), 2012.
87. Mulangu S, Dodd LE, Davey RT, Jr., et al. A Randomized, Controlled Trial of Ebola Virus Disease Therapeutics. *N Engl J Med* 2019;381:2293-2303.
88. Grein J, Ohmagari N, Shin D, et al. Compassionate Use of Remdesivir for Patients with Severe Covid-19. *N Engl J Med* 2020.
89. Cao B, Wang Y, Wen D, et al. A Trial of Lopinavir-Ritonavir in Adults Hospitalized with Severe Covid-19. *N Engl J Med* 2020.
90. Kaletra (lopinavir and ritonavir) tablets and oral solution [prescribing information]. North Chicago, IL: AbbVie Inc; March 2020. Available at: https://www.accessdata.fda.gov/drugsatfda_docs/label/2016/021251s052_021906s046bl.pdf [Accessed April 10, 2020].
91. Lopinavir. LiverTox: Clinical and Research Information on Drug-Induced Liver Injury. Bethesda (MD), 2012.
92. Cai Q, Yang M, Liu D, et al. Experimental Treatment with Favipiravir for COVID-19: An Open-Label Control Study. *Engineering* 2020.
93. Higgins PDR, Ng S, Danese S, et al. The Risk of SARS-CoV-2 in Immunosuppressed IBD Patients. *Crohn's & Colitis* 360 2020;2.
94. Rodriguez-Lago I, Ramirez de la Piscina P, Elorza A, et al. Characteristics and prognosis of patients with inflammatory bowel disease during the SARS-CoV-2 pandemic in the Basque Country (Spain). *Gastroenterology* 2020.
95. Rubin DT, Feuerstein JD, Wang AY, et al. AGA Clinical Practice Update on Management of Inflammatory Bowel Disease During the COVID-19 Pandemic: Expert Commentary. *Gastroenterology* 2020.
96. Rubin DT, Abreu MT, Rai V, et al. Management of Patients with Crohn's Disease and Ulcerative Colitis During the COVID-19 Pandemic: Results of an International Meeting. *Gastroenterology* 2020.
97. Norsa L, Indriolo A, Sansotta N, et al. Uneventful course in IBD patients during SARS-CoV-2 outbreak in northern Italy. *Gastroenterology* 2020.
98. Peyrin-Biroulet L. Will the Quality of Research Remain the Same During the COVID-19 Pandemic? *Clin Gastroenterol Hepatol* 2020.
99. World Health Organization. Report of the WHO-China Joint Mission on Coronavirus Disease 2019 (COVID-19). Available at: <https://www.who.int/docs/default-source/coronaviruse/who-china-joint-mission-on-covid-19-final-report.pdf> [Accessed April 20, 2020].

Supplement

FIGURES

Figure 1: PRISMA flow diagram of included studies

Figure 2: Matrix of study authors and hospitals including 118 studies

Figure 3: Forest plot of the prevalence of diarrhea in all admitted patients regardless of the timing of diarrhea

Figure 4: Forest plot of the prevalence of diarrhea as one of the initial symptoms in all patients regardless of hospitalization status

Figure 5: Forest plot of the prevalence of diarrhea as one of the initial symptoms in all admitted patients

Figure 6: Forest plot of the prevalence of diarrhea in outpatients regardless of the timing of diarrhea

Figure 7: Forest plot of the prevalence of nausea/vomiting as one of the initial symptoms in all patients regardless of hospitalization status

Figure 8: Forest plot of the prevalence of abdominal pain as one of the initial symptoms in all patients regardless of hospitalization status

Figure 9: Forest plot of the prevalence of elevated AST

Figure 10: Forest plot of the prevalence of elevated ALT

Figure 11: Forest plot of the prevalence of elevated T. Bilirubin

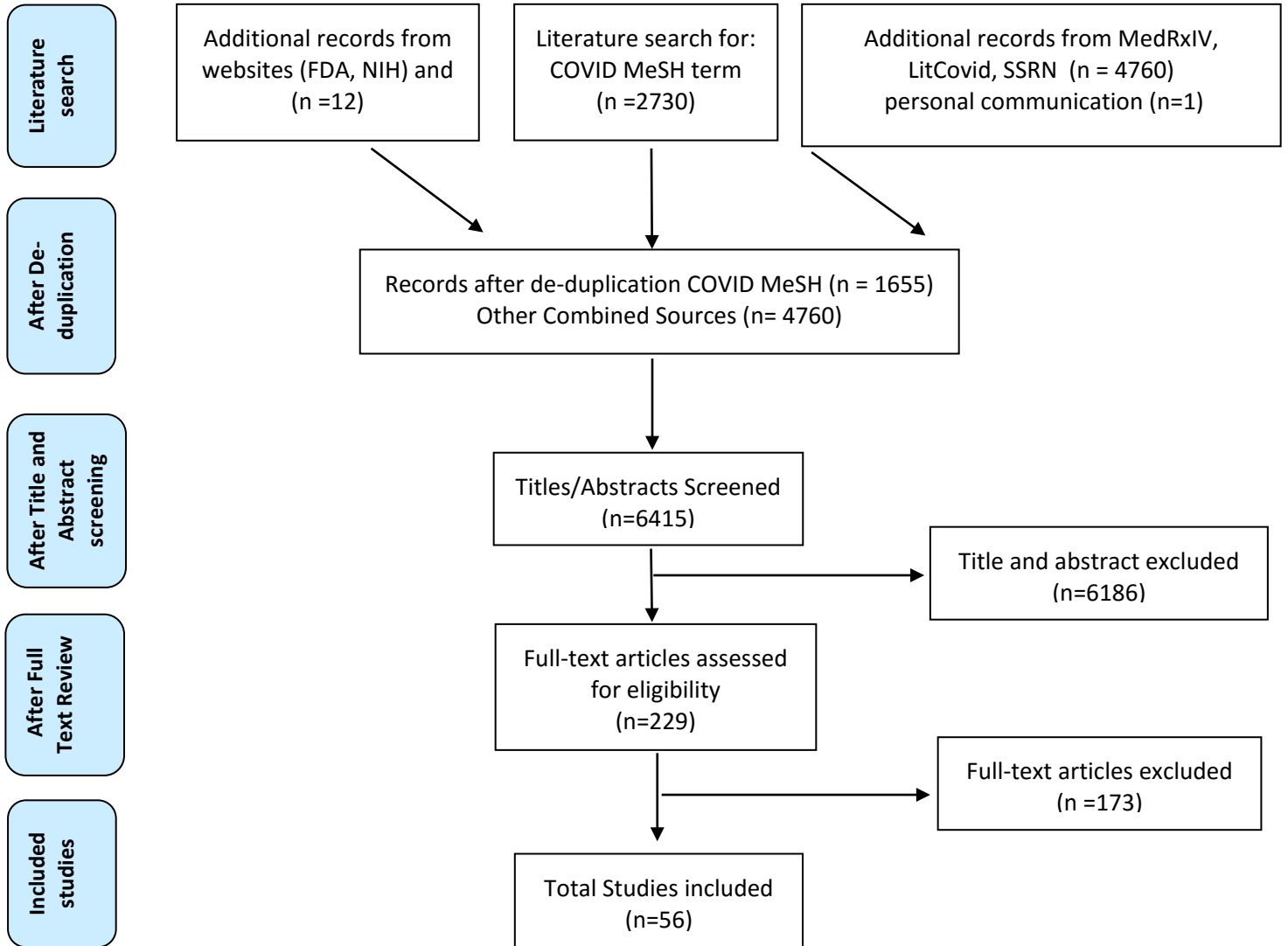
TABLES

Table 1 Summary of Included Studies

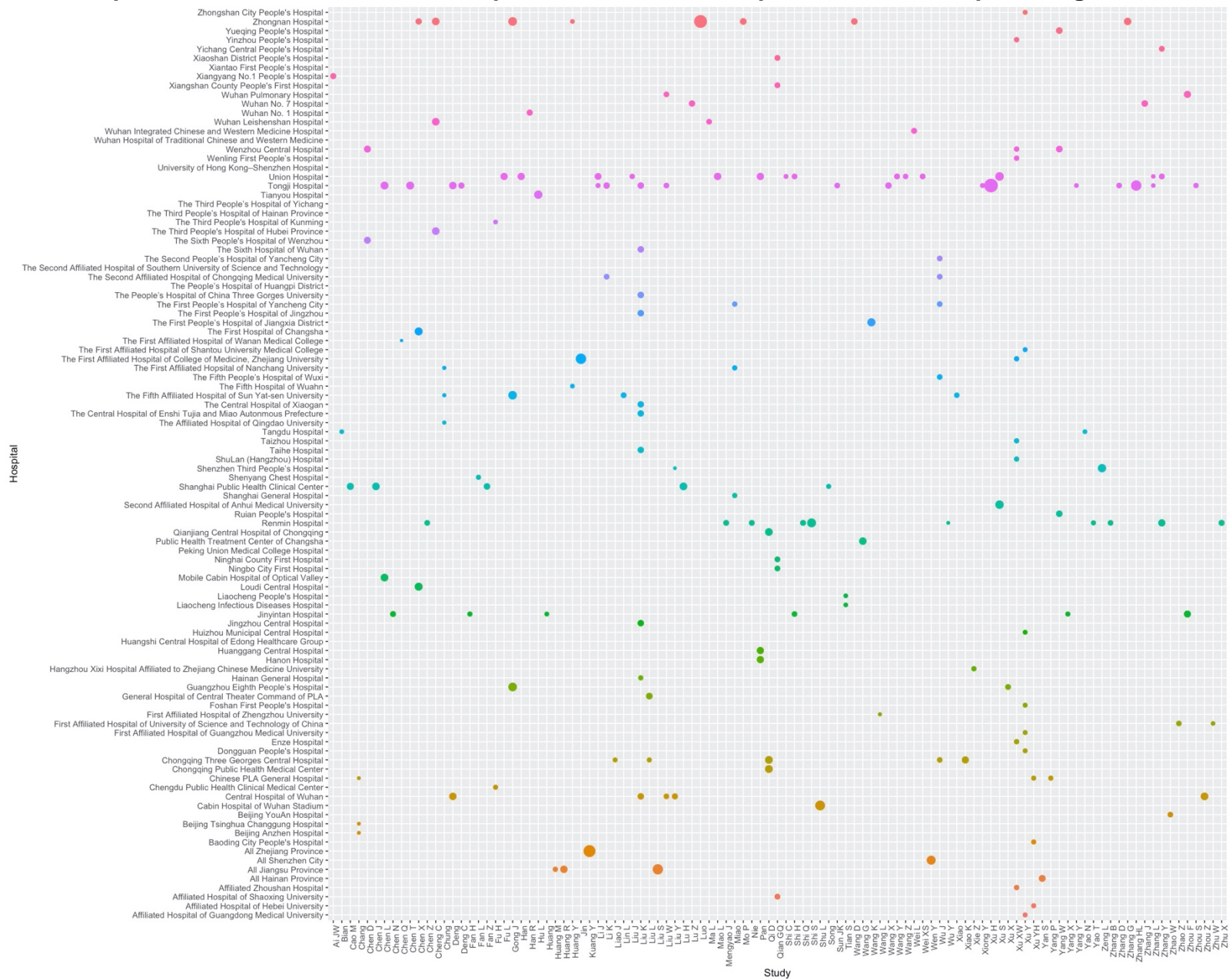
Table 2 Direct Evidence of Proposed COVID-19 Therapies

Table 3 Indirect Evidence of Proposed COVID-19 Therapies

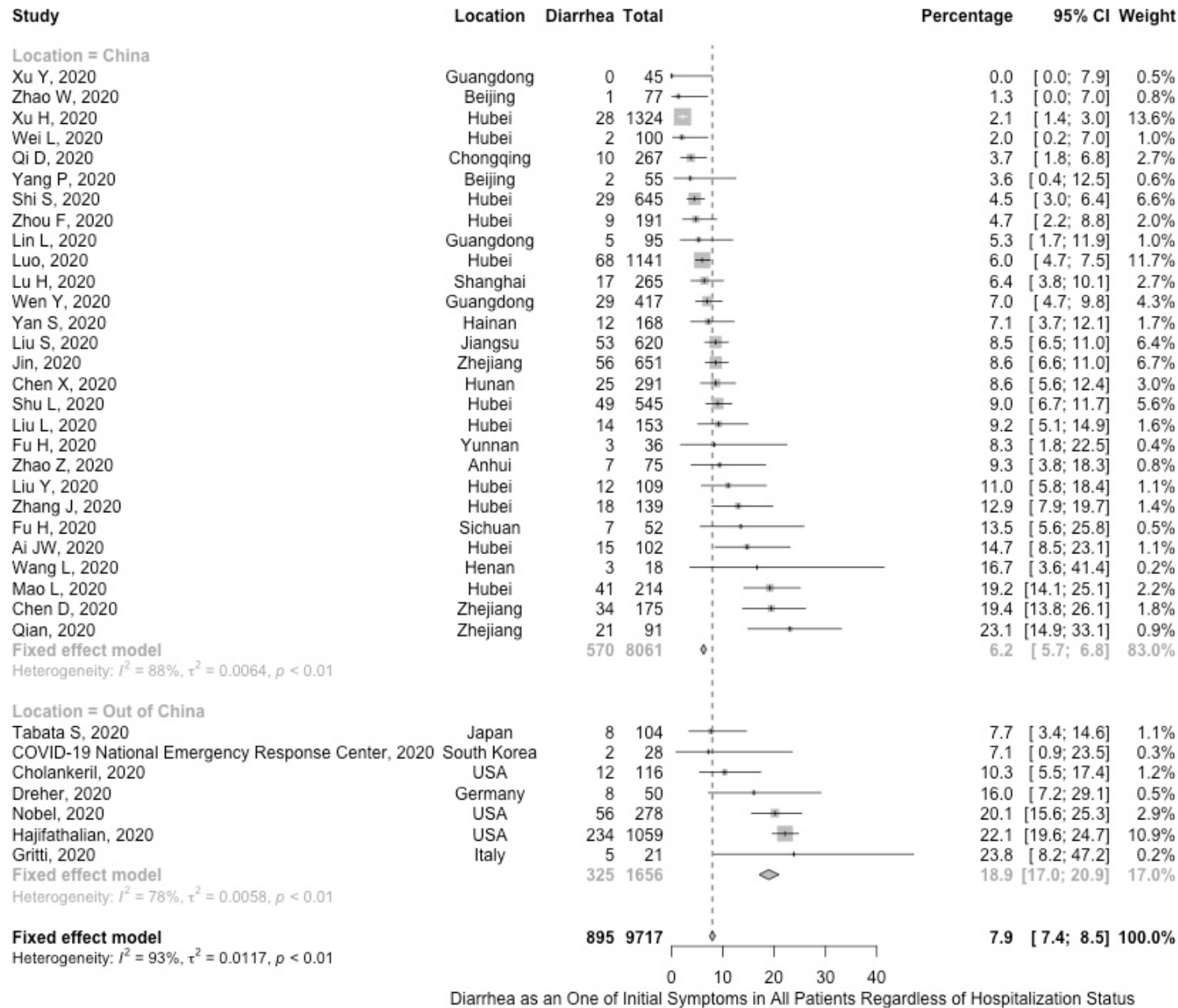
Supplement Figure 1: PRISMA 2009 Flow Diagram



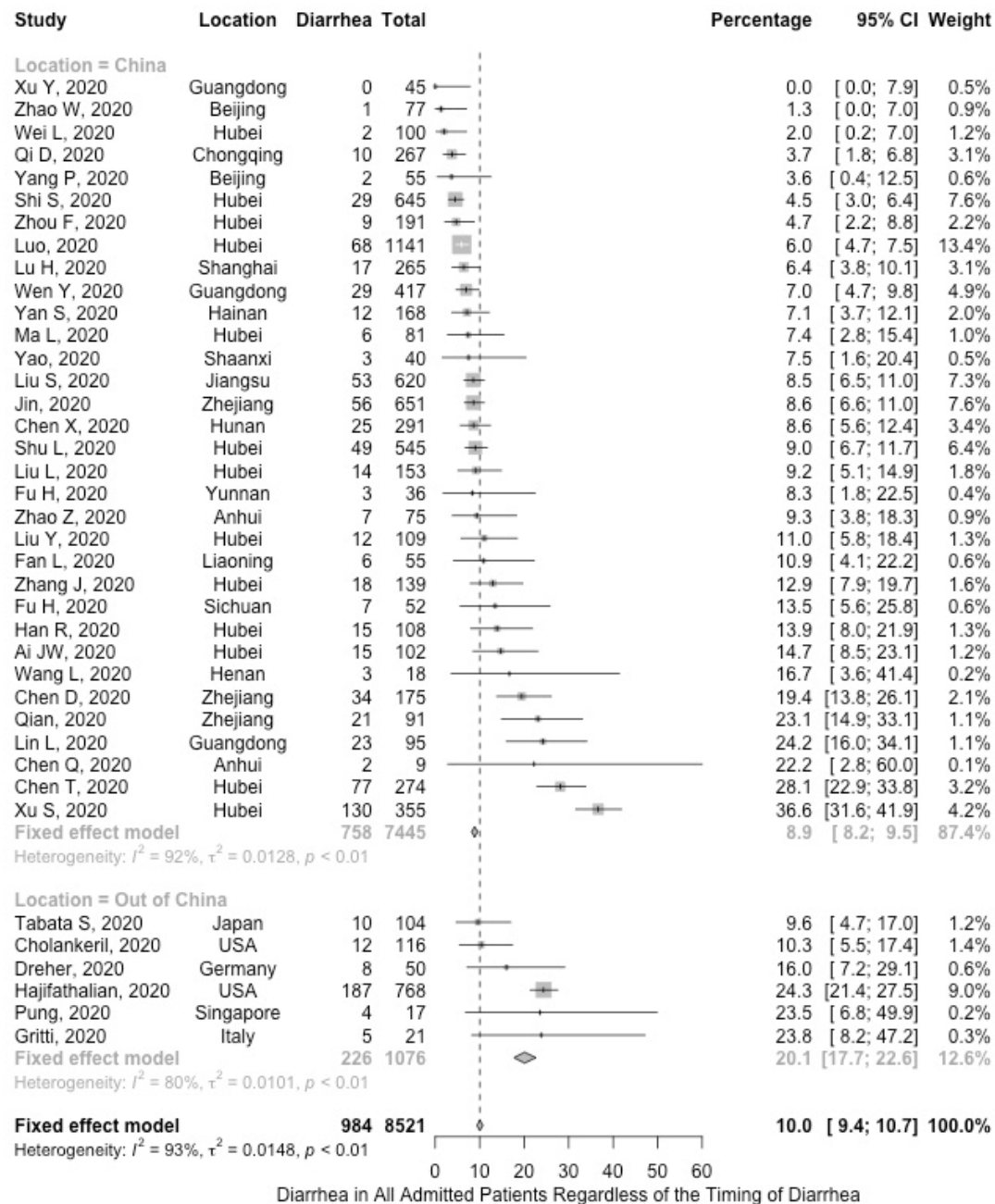
Supplement Figure 2: The matrix used in the selection of the Chinese studies. The X axis represents the studies. The Y axis represent the hospitals included in the study. The size of the bubble reflects the number of patients in the study. Two studies by Guan et al (doi: 10.1056/NEJMoa2002032 and 10.1183/13993003.00547-2020) were not included in the plot as they included patients from more than 500 hospitals from 30 or more provinces without providing the names of the hospitals.



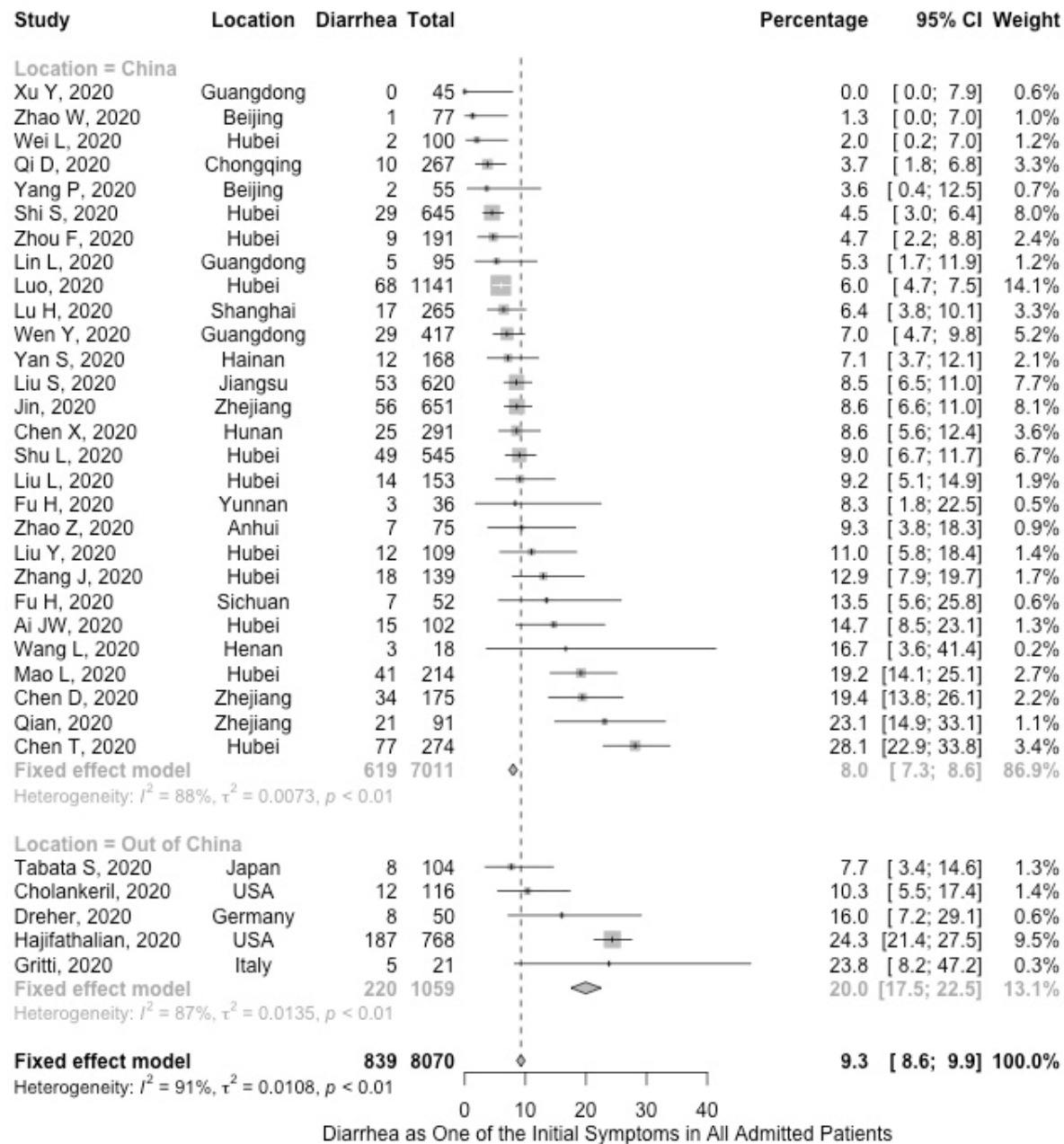
Supplement Figure 3. Forest plot of the prevalence of diarrhea in all admitted patients regardless of the timing of diarrhea



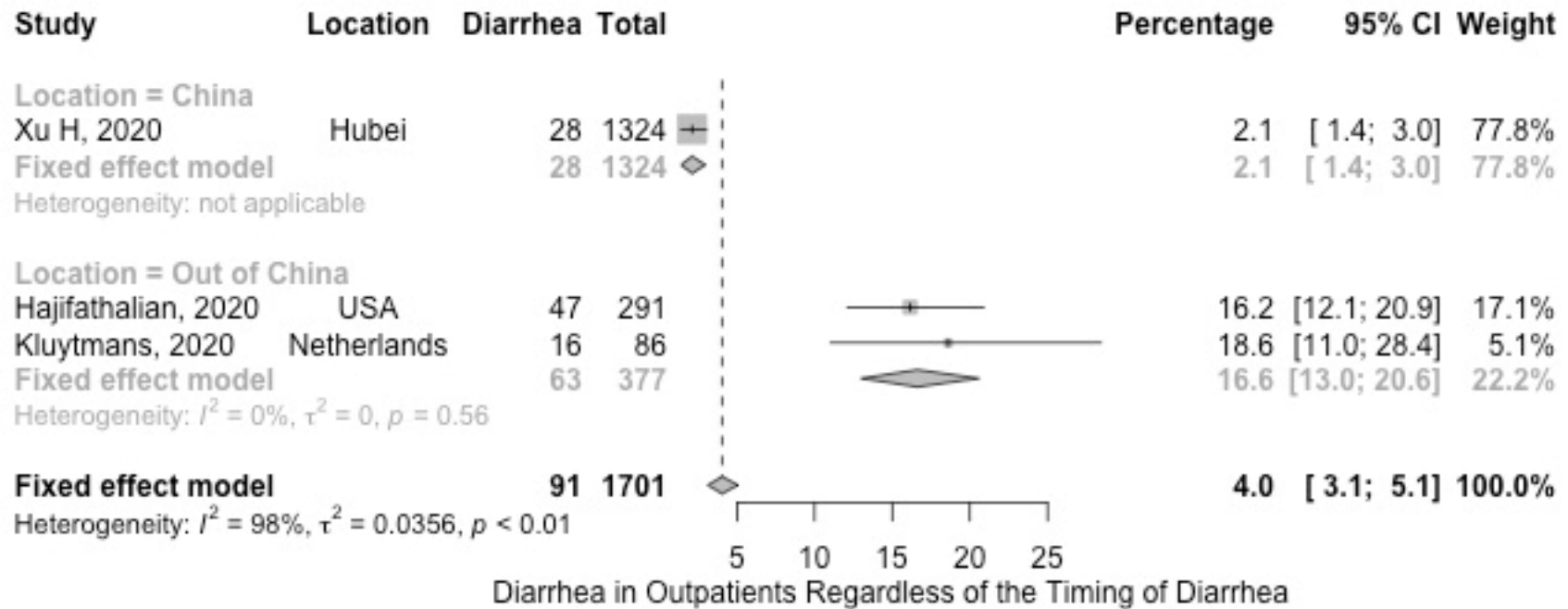
Supplement Figure 4: Forest plot of the prevalence of diarrhea as one of the initial symptoms in all patients regardless of hospitalization status



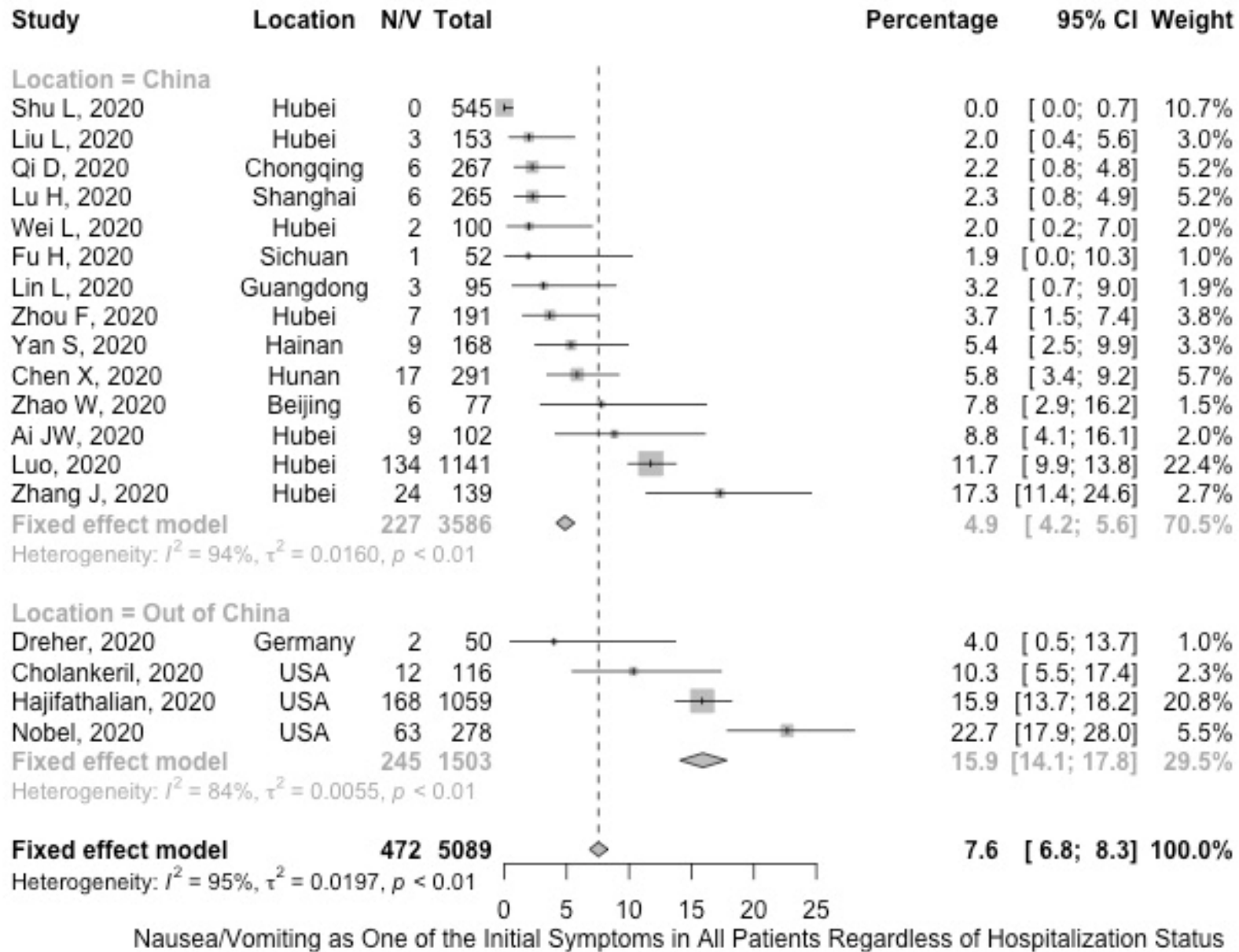
Supplement Figure 5: Forest plot of the prevalence of diarrhea as one of the initial symptoms in all admitted patients



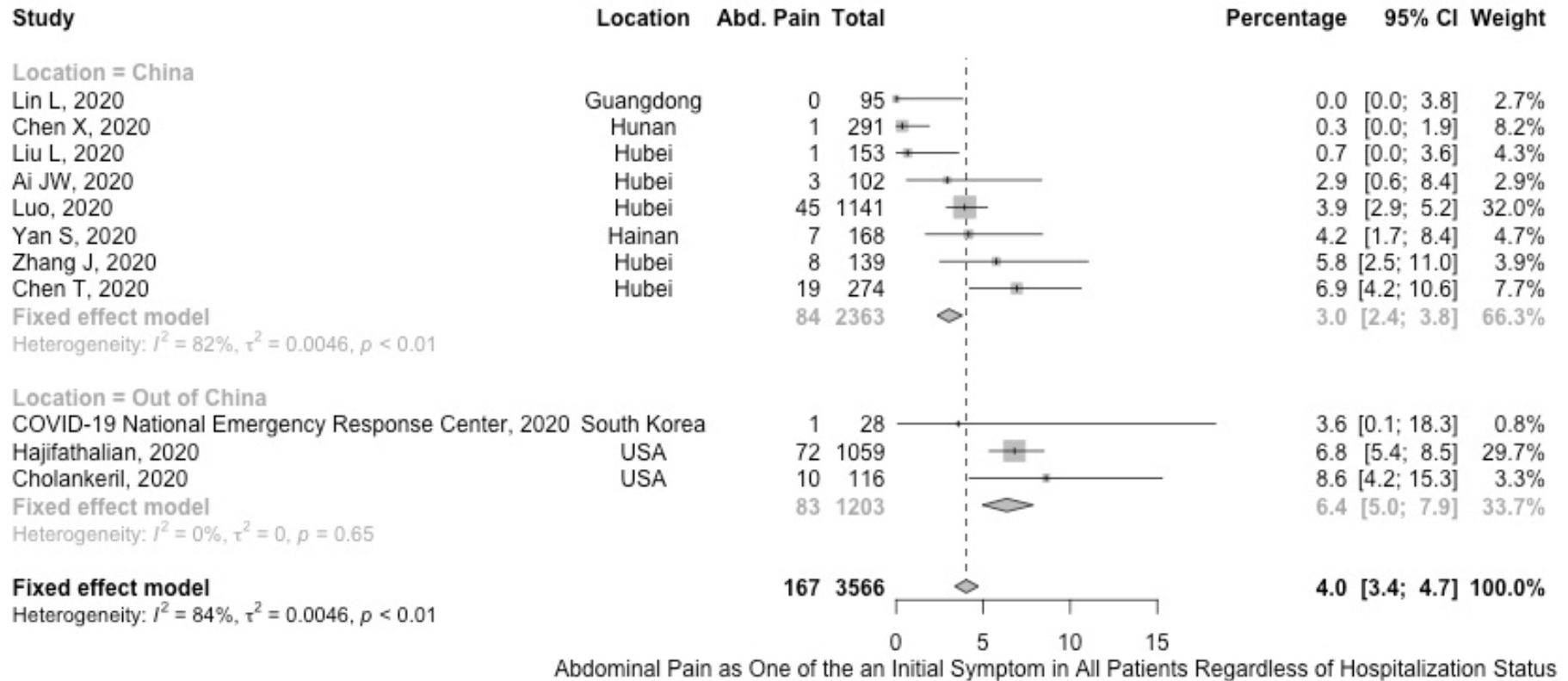
Supplement Figure 6: Forest plot of the prevalence of diarrhea in outpatients regardless of the timing of diarrhea



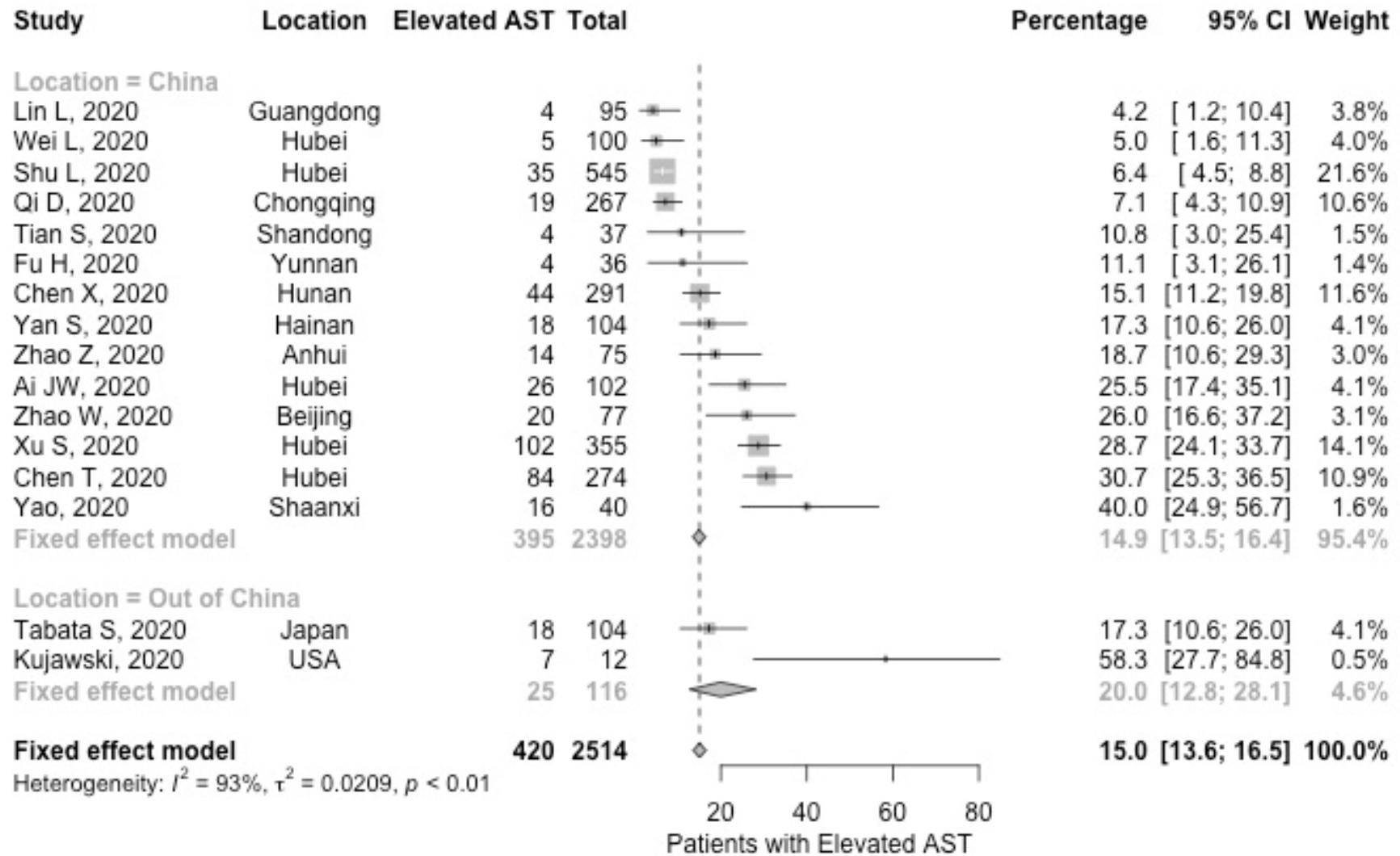
Supplement Figure 7: Forest plot of the prevalence of nausea/vomiting as one of the initial symptoms in all patients regardless of hospitalization status



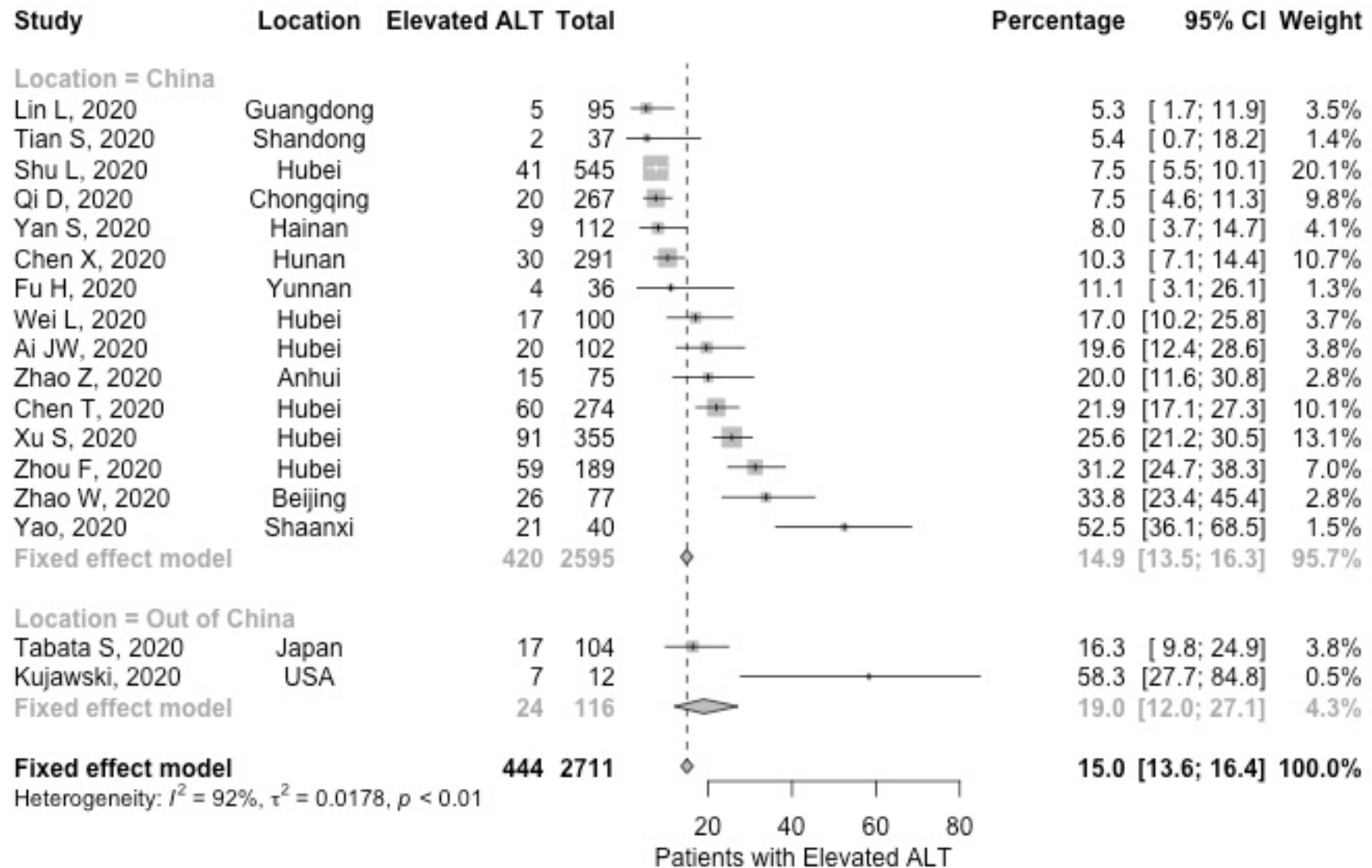
Supplement Figure 8: Forest plot of the prevalence of abdominal pain as one of the initial symptoms in all patients regardless of hospitalization status



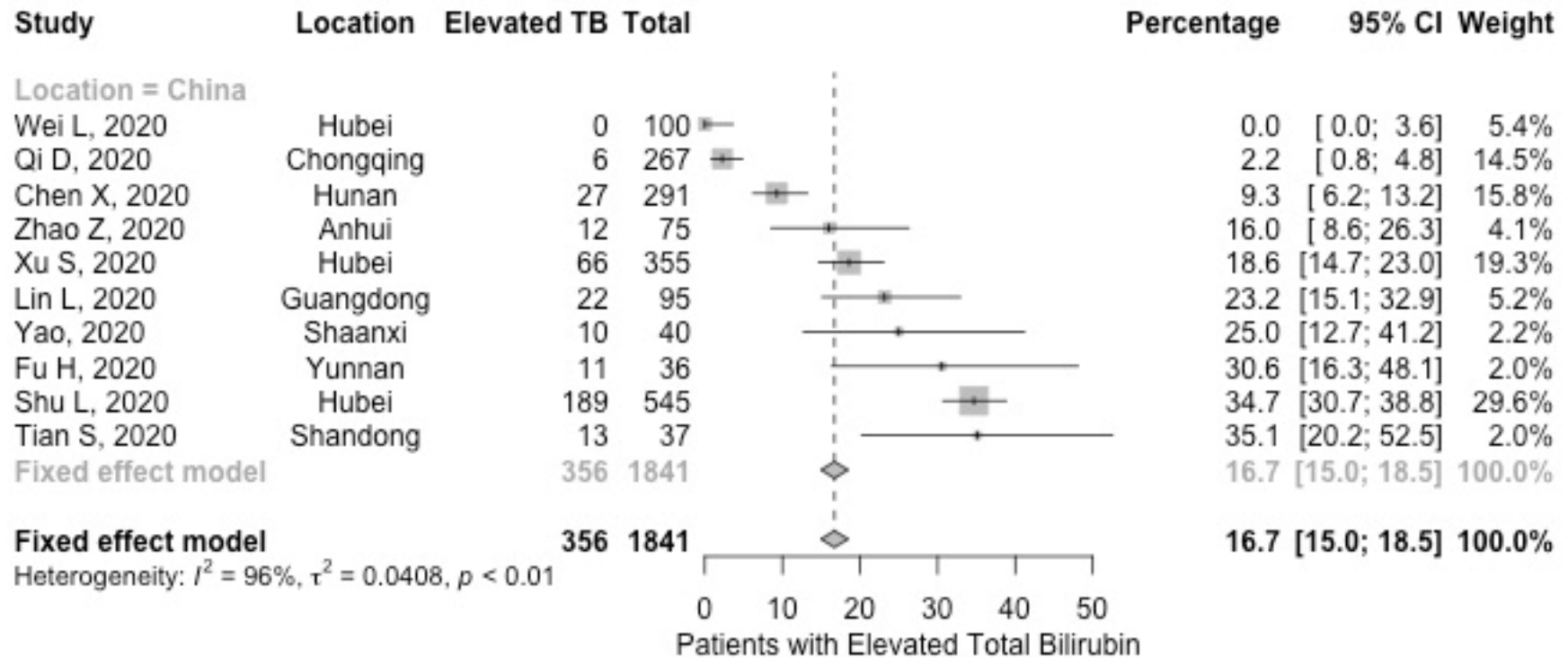
Supplement Figure 9: Forest plot of the prevalence of elevated AST



Supplement Figure 10: Forest plot of the prevalence of elevated ALT



Supplement Figure 11: Forest plot of the prevalence of elevated total bilirubin



Supplement Table 1: Summary of included studies

Hubei Province, China			
<p>Luo et al 2020⁵⁰ Zhongnan Hospital (Wuhan)</p> <p>Dates: 01/01/2020- 02/20/2020</p> <p>Last follow-up: NR</p>	<p>N: 1141 Survival: 3.8% (7/183) death, 96.2% recovered</p> <p>Inclusion: Inpatients with COVID-19 (throat swab rt-PCR). All patients received chest CT. Details only provided for the 183 patients with GI symptoms.</p> <p>Age: m 53.8 (183 patients) Gender: 44.3% (81/183) females</p> <p>GI/liver comorbidities: NR Disease severity: NR</p>	<p>Diarrhea: 6.0% (68) Present on admission</p> <p>Abdominal pain: 3.9% (45) Present on admission</p> <p>Nausea: 11.7% (134) Present on admission</p> <p>Vomiting: 10.4% (119) Present on admission</p> <p>Nausea and vomiting: 3.2% (37) Present on admission</p> <p>183 patients presented with GI symptoms only (diarrhea, abdominal pain, nausea, vomiting, and/or loss of appetite). 96% of them had lung lesions on chest CT.</p>	<p>AST (183 patients) m 65.8 ± 12.7</p> <p>ALT (183 patients) m 66.4 ± 13.2</p>
<p>Zhou F, 2020²⁰ Jinyintan Hospital (Wuhan)</p> <p>Dates: 12/29/2019- 01/31/2020</p> <p>Last follow-up: 01/31/2020</p>	<p>N: 191 Survival: 28.3% death, 71.8% discharged</p> <p>Inclusion: Inpatients with COVID-19 (confirmed with rt- PCR) who died or were discharged. Patients without key information excluded (9).</p> <p>Age: M 56 (IQR 46-67) Gender: 37.7% females</p> <p>GI/liver comorbidities: NR Disease severity: General 28%, severe: 35%, critical 28%</p>	<p>Diarrhea: 4.7% (9/191) Present on admission 2 died and 7 discharged</p> <p>Nausea/vomiting: 3.7% (7/191) Present on admission 3 died and 4 discharged</p> <p>Abdominal pain: NR</p>	<p>AST: NR</p> <p>ALT>40: 31.2% (59/189) 26 died and 33 discharged</p> <p>Total bilirubin: NR</p>

<p>Zhang J, 2020²³ Wuhan No. 7 Hospital (Wuhan)</p> <p>Dates: 1/16/2020- 02/03/2020</p> <p>Last follow-up: NR</p>	<p>N: 140 Survival: NR</p> <p>Inclusion: Inpatient with COVID-19 (pharyngeal swab PCR) based on symptoms and chest X-ray.</p> <p>Age: 57 (25-87) Gender: 49.3% females</p> <p>GI/liver comorbidities: 5.7% fatty liver and abnormal liver function, 5.0% chronic gastritis and gastric ulcer, 4.3% cholelithiasis, 6.4% cholecystectomy 5.0% appendectomy, 0.7% hemorrhoidectomy, 4.3% tumor surgery Disease severity: Severe 41.4% and 58.6% non-severe</p>	<p>Diarrhea: 12.9% (18/139) Present on admission 9/82 non-severe cases and 9/57 severe cases</p> <p>Nausea: 17.3% (24/139) Present on admission 19/82 non-severe cases and 5/57 severe cases</p> <p>Vomiting: 5.0% (7/139) Present on admission 5/82 non-severe cases and 2/57 severe cases</p> <p>Belching 5.0% (7/139) Present on admission 4/82 non-severe cases and 3/57 severe cases</p> <p>Abdominal pain: 5.8% (8/139) Present on admission 2/82 non-severe cases and 6/57 severe cases</p> <p>Other pathogens were detected including mycoplasma pneumoniae in 5, RSV in 1, EBV in 1.</p>	<p>AST, ALT, and Bilirubin: NR</p>
<p>Chen T, 2020⁷² Tongji Hospital (Wuhan)</p> <p>Dates: 01/13/2020- 02/12/2020</p> <p>Last follow-up: 02/28/2020</p>	<p>N: 274 Survival: 52.2% death, 47.8% recovered</p> <p>Inclusion: Moderate severity, severe or critically ill COVID-19 patients (throat swab or BAL rt-PCR) who were deceased or discharged.</p> <p>Age: M 62.0 (IQR 44-70) Gender: 37.6% female</p> <p>GI/liver comorbidities: 4% Hepatitis B surface Ag positivity, 1% gastrointestinal diseases Disease severity: Moderate severity, severe or critically ill.</p>	<p>Diarrhea: 28.1% (77) Present on admission 27/113 deceased and 50/161 discharged</p> <p>Nausea: 8.8% (24) Present on admission 8/113 deceased and 16/161 discharged</p> <p>Vomiting: 5.8% (16) Present on admission 6/113 deceased and 10/161 discharged</p> <p>Abdominal pain: 6.9% (19) Present on admission 6/113 deceased and 13/161 discharged</p>	<p>AST >40: 30.7% (84) 59/113 deceased and 25/161 discharged M 30 (IQR 22-46). Deceased M 45 (IQR 31-67) and discharged M 25 (IQR 20-33)</p> <p>ALT >41: 21.9% (60) 30/113 deceased and 30/161 discharged M 23 (IQR 15-38). Deceased M 28 (IQR 18-47) and discharged M 20 (IQR 15-32)</p> <p>Bilirubin M 0.6 (IQR 0.4-0.8). Deceased M 0.7 (IQR 0.6-1.0) and discharged M 0.5 (IQR 0.3-0.7)</p>

<p>Xu H, 2020³¹ Tongji Hospital (Wuhan)</p> <p>Dates: 1/15/2020- 2/19/2020</p> <p>Last follow-up: NR</p>	<p>N: 1324 Survival: NR</p> <p>Inclusion: Outpatient COVID-19 patients presenting to fever clinic, based on PCR.</p> <p>Age: m 48 ± 15.3 Gender: 50.8% females</p> <p>GI/liver comorbidities: NR Disease severity: 95.9% light condition, 3.8% severe, 0.3% critical</p>	<p>Diarrhea: 2.1% (28) Present on admission</p> <p>Loss of appetite: 4.2% Present on admission</p> <p>Nausea, vomiting, and abdominal pain: NR</p>	<p>NR</p>
<p>Shi S, 2020⁴² Renmin Hospital (Wuhan)</p> <p>Dates: 1/1/2020- 2/10/2020</p> <p>Last follow-up: 2/15/2020</p>	<p>N: 645 Survival: 7.3% death, 5.1% discharged (416 patients)</p> <p>Inclusion: Inpatient laboratory-confirmed COVID-19, consecutive. Detailed results reported for 416 patients with complete results.</p> <p>Age: M 45-64 (range 21-95) Gender: 52.9% female</p> <p>GI/liver comorbidities: 1% hepatitis B infection (of 416 patients) Severity: NR</p>	<p>Diarrhea: 4.5% (29) Present on admission</p> <p>Abdominal pain, nausea, vomiting: NR</p>	<p>AST (416 patients) M 30 (IQR 22-43).</p> <p>ALT (416 patients) M 28 (IQR 18-46).</p> <p>Bilirubin: NR</p>
<p>Han R, 2020⁶² Wuhan No.1 Hospital</p> <p>Dates: 1/4/2020- 2/3/2020</p> <p>Last follow-up: NR</p>	<p>N: 108 Survival: NR death, NR recovered</p> <p>Inclusion: Inpatients COVID-19 (confirmed by rt-PCR) with mild pneumonia, no history of other lung infection, initial CT performed.</p>	<p>Diarrhea: 14% (15/108)</p> <p>Abdominal pain, nausea, vomiting: NR</p>	<p>No lab data reported</p>

	<p>Exclusion: CT scans performed as follow-up for COVID-19 pneumonia, or chest CT image quality insufficient for image analysis</p> <p>Age: mean 45 (range 21-90) Gender: 64.8% females</p> <p>GI/liver comorbidities: Not specified Disease severity: NR</p>		
<p>Xu S, 2020³⁰ Union Hospital (Wuhan)</p> <p>Dates: 1/25/2020-2/20/2020</p> <p>Last follow-up: 2/20/2020</p>	<p>N: 355 Survival: NR</p> <p>Inclusion: Inpatients with COVID-19, confirmed based on rt-PCR.</p> <p>Age: 45.1% aged <50, 41.7% aged 50-69, 13.2% aged ≥70 Gender: 45.6% females</p> <p>GI/liver comorbidities: NR Disease severity: 63.1% mild, 16.9% severe, 20% critical</p>	<p>Diarrhea: 36.6% (130/355)</p> <p>Abdominal pain, nausea, vomiting NR</p>	<p>AST: 28.7% (102/355) m 40.8 (range 10- 475)</p> <p>ALT: 25.6% (91/355) m 35.0 (range 1-414)</p> <p>Total bilirubin: 18.6% (66/355) m 0.83 (range 0.1 – 29.9)</p>
<p>Ma L, 2020⁴⁹ Wuhan Leishenshan Hospital (Wuhan)</p> <p>Dates: 3/5/2020-3/18/2020</p> <p>Last follow-up: NR</p>	<p>N:81 Survival: NR</p> <p>Inclusion: Inpatients with COVID-19 (rt-PCR on nasal and pharyngeal swabs)</p> <p>Age: M 38 (IQR 34.5-42.5) Gender: 0% female</p> <p>GI/liver comorbidities: NR</p>	<p>Diarrhea: 7.41% (6/81)</p> <p>Nausea/vomiting: NR</p> <p>Abdominal pain: NR</p>	<p>AST/ALT - composite report 31/81 abnormal but no threshold</p> <p>AST M 23 (IQR 12-453)</p> <p>ALT M 43 (IQR 13-799)</p> <p>Bilirubin: NR</p>

	Disease severity: 2.5% mild, 86.4% moderate, 8.6% severe, 2.5% critical.		
<p>Liu L, 2020⁵⁴ General Hospital of Central Theater Command of PLA (Wuhan)</p> <p>Dates: 2/6/2020 - 2/14/2020</p> <p>Last follow-up: NR</p>	<p>N: 153 (85 tested negative but had symptoms, we did not include those patients) Survival: NR</p> <p>Inclusion: Inpatients with COVID-19 (rt-PCR on pharyngeal swabs)</p> <p>Age: M 55 (IQR 38.3-65) Gender: 39.2% female</p> <p>GI/liver comorbidities: NR Disease severity: NR</p>	<p>Diarrhea: 9.2% (14/153) Present on admission</p> <p>Nausea: 1.3% (2/153) Present on admission</p> <p>Vomiting: 2% (3/153) Present on admission</p> <p>Abdominal pain: 0.4% (1/153) Present on admission</p>	<p>AST, ALT, and Bilirubin: NR</p>
<p>Huang Y, 2020⁶¹ The Fifth Hospital of Wuhan (Wuhan)</p> <p>Dates: 1/21/2020-2/10/2020</p> <p>Last follow up: 2/14/2020</p>	<p>N: 36 Survival: 100% death</p> <p>Inclusion: Inpatients with COVID-19 (RT-PCR)</p> <p>Age: mean 69.22 (SD 9.64 range 50-90) Gender: 30.56% female</p> <p>GI/liver comorbidities: NR Disease severity: NR</p>	<p>Diarrhea: 8.33% (3/36) Present on admission</p> <p>Nausea: NR</p> <p>Vomiting: NR</p> <p>Abdominal pain: NR</p>	<p>AST: > 40 58.1% (18/31) M 43 (IQR 30-51)</p> <p>ALT: > 50 13.3% (4/30) M 26 (IQR 18-38)</p> <p>Bilirubin: > 25 12.9% (4/31) M 11.2 (IQR 7.5-19.2)</p>
<p>Mao L, 2020⁴⁸ Union Hospital (Wuhan)</p> <p>Dates: 1/16/2020-2/19/2020</p> <p>Last follow up: NR</p>	<p>N: 214 Survival: 1 died but not fully reported.</p> <p>Inclusion: Inpatients with COVID-19 (RT-PCR from throat)</p> <p>Age: m 52.7 ± 15.5 Gender: 59.3% female</p>	<p>Diarrhea: 19.2% (41/214) Present on admission Severe disease 14.8% (13/88), non-severe disease 22.2% (28/126)</p> <p>Abdominal pain: 4.7% (10/214) - Not included in the analysis Present on admission Severe disease 6.8% (6/88), non-severe disease 3.2% (4/126)</p>	<p>AST 26 (8-8191) Severe 34 (8-8191), non-severe 23 (9-244)</p> <p>ALT 26 (5-1933) Severe 32.5 (5-1933), non-severe 23 (6-261)</p>

	GI/liver comorbidities: NR Disease severity: 58.9% non-severe, 41.1% severe	Nausea and vomiting: NR	
Ai JW, 2020 ⁷⁶ Xiangyang No.1 People's Hospital Dates: Cross-sectional study 2/9/2020	N: 102 Survival: 2.9% died, 6.9% survived, 90.2% still hospitalized Inclusion: Inpatients with laboratory-confirmed COVID-19 Age: m 50.4 ± 16.9 Gender: 49.1% females GI/liver comorbidities: NR Disease severity: NR	Diarrhea: 14.3% (15) Present on admission Diarrhea was the first symptom in 2 patients Nausea: 8.8% (9) Present on admission Vomiting: 2.0% (2) Present on admission Abdominal pain: 2.9% (3) Present on admission	AST >40: 25.5% (26/102) Mean 30.59 (SD 15.03) ALT >50: 19.6% (20/102) Mean 27.77 (SD 21.13) Total bilirubin NR
Liu Y, 2020 ⁵² Central Hospital of Wuhan (Wuhan) Dates: 1/2/2020- 2/1/2020 Last follow-up: NR	N: 109 Survival: 28.4% died, NR otherwise Inclusion: Inpatient with COVID-19 confirmed based on rt-PCR on throat swab Age: M 62.5 (IQR 47.25-65) Gender: 33.3% females GI/liver comorbidities: NR Disease severity: NR	Diarrhea: 11% (12) Present on admission 6/12 with ARDS and 6/12 with no ARDS Nausea, vomiting and abdominal pain: NR	AST: M 30 (IQR 21-40) No ARDS 29 (19-38); ARDS 31 (25-44) ALT: M 23 (IQR 15-36) No ARDS 23 (14-41); ARDS 24 (16-31) Total bilirubin: NR
Shu L, 2020 ⁴¹ Cabin Hospital of Wuhan Stadium (Wuhan) Dates: 2/13/2020- 2/29/2020 Last follow-up: NR	N: 545 Survival: 85.9% discharged, 14.1% still hospitalized, 0% died Inclusion: Inpatient with COVID-19 confirmed based on rt-PCR. Severe cases requiring transfer were excluded. Age: M 50 (IQR 38-58) Gender: 51.2% females	Diarrhea: 8.9% (49) Present on admission Nausea or vomiting: 0% (0) Present on admission	AST >45: 6.4% (35) M 32.1 (IQR 24.5-36.4) ALT >50: 7.5% (41) M 34.6 (IQR 26.2-42.3) Bilirubin >1.2: 34.7% (189) M 1.1 (IQR 0.8-1.3)

	<p>GI/liver comorbidities: 0 chronic liver disease</p> <p>Disease severity: 2.9% mild, 97.1% moderate, 0 severe (excluded).</p>		
<p>Wei L, 2020³⁴</p> <p>Wuhan Integrated Chinese and Western Medicine Hospital (Wuhan)</p> <p>Dates: 2/1/2020-2/28/2020</p> <p>Last follow-up: NR</p>	<p>N: 100</p> <p>Survival: 3% died, 1% discharged, 96% still hospitalized.</p> <p>Inclusion: Inpatients with COVID-19 confirmed based on rt-PCR. Only mild cases.</p> <p>Age: m 49.1 ± 17.2</p> <p>Gender: 60% females</p> <p>GI/liver comorbidities: 9% digestive system diseases, 6% chronic gastritis</p> <p>Disease severity: 100% mild.</p>	<p>Diarrhea: 2% (2)</p> <p>Present on admission</p> <p>Vomiting: 2% (2)</p> <p>Present on admission</p>	<p>AST elevated: 5 (5%)</p> <p>ALT elevated: 17 (17%)</p> <p>Total bilirubin abnormal: 0 (0%)</p>
Other Chinese Provinces			
<p>Chen Q, 2020⁷³</p> <p>The First Affiliated Hospital of Wanan Medical College (Wuhu) Anhui</p> <p>Dates: NA (Case series)</p>	<p>N: 9</p> <p>Survival: 100% discharged</p> <p>Inclusion: Inpatients with COVID-19 confirmed on rt-PCR via swab</p> <p>Age: range 25-56</p> <p>Gender: 44.4% females</p> <p>GI/liver comorbidities: NR</p> <p>Disease severity: 55.6% moderately ill and 44.4% severely ill</p>	<p>Diarrhea: 22.2% (2)</p> <p>Nausea/vomiting: 0% (0)</p> <p>Abdominal pain: 0% (0)</p>	<p>AST, SLT, and bilirubin: NR</p>

<p>Zhao Z, 2020²¹ First Affiliated Hospital of University of Science and Technology of China (Hefei) Anhui</p> <p>Dates: 1/21/2020- 2/16/2020</p> <p>Last follow-up: NR</p>	<p>N: 75 Survival: NR</p> <p>Inclusion: Inpatients with COVID-19 based on rt-PCR.</p> <p>Age: M 47 (IQR 34-55) Gender: 44% females</p> <p>GI/liver comorbidities: chronic liver disease 5.3%</p> <p>Disease severity: NR</p>	<p>Diarrhea: 9.3% (7) Present on admission</p> <p>Abdominal pain: 1.3% (1) Present on admission</p> <p>Nausea/vomiting: NR</p>	<p>AST > 40: 18.7% (14) M 27 (IQR 21-37)</p> <p>ALT >40: 20% (15) M 23 (IQR 14-43)</p> <p>Bilirubin >1.2: 16% (12) M 0.85 (IQR 0.65-1.06)</p> <p>ALT, ALT and TB were not associated with elevated IL-6 (a study outcome)</p>
<p>Zhao W, 2020²² Beijing YouAn Hospital Beijing</p> <p>Dates: 1/21/2020- 2/8/2020</p> <p>Last follow-up: 2/29/2020</p>	<p>N: 77 Survival: 6.5% died, 83.1% discharged, 10.4% still hospitalized</p> <p>Inclusion: Inpatients with COVID-19 based on rt-PCR.</p> <p>Age: m 52 ± 2 Gender: 55.8% females</p> <p>GI/liver comorbidities: 10.4% digestive diseases Disease severity: 74% non- severe, 26% severe</p>	<p>Diarrhea: 1.3% (1) Present on admission 1/57 non-severe and 0/20 severe</p> <p>Nausea or vomiting: 7.8% (6) Present on admission 3/57 non-severe and 3/20 severe</p> <p>Abdominal pain: NR</p>	<p>AST > 40: 26.0% (20) 11/57 non-severe and 9/20 severe M 19 (IQR 21-42)</p> <p>ALT >40: 33.8% (26) 17/57 non-severe and 9/20 severe M 28 (IQR 20-46)</p> <p>Bilirubin NR</p>
<p>Yang P, 2020²⁶ Chinese PLA General Hospital Beijing</p> <p>Dates: 12/27/2019- 2/18/2020</p> <p>Last follow-up: 2/18/2020</p>	<p>N: 55 Survival: 3.6% died</p> <p>Inclusion: Inpatients with COVID-19, confirmed with rt- PCR.</p> <p>Age: M 44 (IQR 34-54, range 3- 85) Gender: 40% females</p> <p>GI/liver comorbidities: 1.8% chronic liver disease</p>	<p>Diarrhea: 3.6% (2) Present on admission 0/21 of the patients without pneumonia on admission and 2/34 of the patients with pneumonia</p> <p>Nausea, vomiting, and abdominal pain: NR</p>	<p>AST, ALT, and bilirubin: NR</p>

	Disease severity: 38.2% mild, 36.4% common, 23.6% severe, and 1.8% extremely severe.		
Li K, 2020 ⁵⁶ The Second Affiliated Hospital of Chongqing Medical University, Chongqing Dates: 1/2020-2/2020 Last follow-up:	N: 83 Survival: NR Inclusion: Inpatients with COVID-19 and at least one abnormal CT scan. Patients with normal CT were excluded (8). Age: m 45 ± 12.3 Gender: 47% females GI/liver comorbidities: NR Disease severity: 69.9% ordinary, and 30.1% severe/critical	Diarrhea and abdominal pain: 8.4% (7) Present on admission Nausea or vomiting: NR	AST, ALT, and bilirubin: NR
Qi D, 2020 ⁴⁵ Chongqing Public Health Medical Center, Chongqing Three Georges Central Hospital, and Qianjiang Central Hospital of Chongqing Chongqing Dates: 1/19/2020-2/16/2020 Last follow-up: 2/16/2020	N: 267 Survival: 1.5% died, 38.6% discharged, 59.9% still hospitalized. Inclusion: Inpatients with COVID-19 based on rt-PCR. Excluded patients with missing data (42). Age: M 48 (IQR 25-65) Gender: 44.2% females GI/liver comorbidities: GI diseases 4.5% Disease severity: 81.3% non-severe and 18.7% severe	Diarrhea: 3.7% (10) Present on admission 7/217 non-severe and 3/50 severe Nausea or vomiting: 2.2% (6) Present on admission 5/217 non-severe and 1/50 severe Anorexia: 17.2% (46) Present on admission 33/217 non-severe and 13/50 severe Abdominal pain: NR	AST >35: 7.2% (19) 9/217 non-severe and 10/50 severe ALT >40: 7.5% (20) 10/217 non-severe and 10/50 severe Bilirubin >1.5: 2.2% (6) 3/217 non-severe and 3/50 severe
Xu X, 2020 ²⁹	N: 90 Survival: NR	Diarrhea: 5.6% (5) Vomiting: 5.6% (5)	NR

<p>Guangzhou Eighth People's Hospital (Guangzhou) Guangdong</p> <p>Dates: 1/23/2020-2/4/2020</p> <p>Last follow-up: NR</p>	<p>Inclusion: Inpatients with COVID-19 based on rt-PCR who had baseline chest CT.</p> <p>Age: M 50 (range 18-86) Gender: 56.7% females</p> <p>GI/liver comorbidities: NR Disease severity: NR</p>	<p>Nausea: 2.2% (2)</p>	
<p>Lin L, 2020⁵⁵</p> <p>The Fifth Affiliated Hospital of Sun Yat-sen University (Zhuhai) Guangdong</p> <p>Dates: 1/17/2020-2/15/2020</p> <p>Last follow-up: 2/15/2020</p>	<p>N: 95 Survival: 0% died, 38.9% discharged, 61.1% still hospitalized</p> <p>Inclusion: Inpatients with confirmed COVID-19.</p> <p>Age: 45.3 ± 18.3 Gender: 52.6% females</p> <p>GI/liver comorbidities: NR Disease severity: 78.9% non-severe, 21.1% severe</p>	<p>Diarrhea: 24.2% (23) 5.2% (5) present on admission. Loose or watery stool, 2-10 bowel movements daily.</p> <p>Vomiting: 4.2% (4) 0% (0) present on admission.</p> <p>Nausea: 17.9% (17) 3.2% (3) present on admission.</p> <p>Abdominal pain: 2.1% (2) 0% (0) present on admission. Epigastric discomfort.</p> <p>11 patients with GI symptoms did not have pneumonia.</p> <p>Viral RNA detected in 31/65 patients including 22/42 who had GI symptoms and 9/23 who did not have GI symptoms.</p>	<p>AST >35 for females and >40 for males: 4.2% (4)</p> <p>ALT >40 for females and >50 for males: 5.3% (5)</p> <p>Bilirubin >1.5: 23.2% (22)</p>
<p>Wen Y, 2020³³</p> <p>All Shenzhen City Guangdong</p> <p>Dates: 1/1/2020-2/28/2020</p> <p>Last follow-up: 2/28/2020</p>	<p>N: 417 Survival: 0.7% died, 71.7% discharged, 27.6% still hospitalized.</p> <p>Inclusion: Inpatients with COVID-19 based on rt-PCR.</p> <p>Age: m 45.4 Gender: 52.8% females</p>	<p>Diarrhea: 7.0% (29) Present on admission. 23/381 of mild/moderates and 6/36 of severe/critical</p> <p>Nausea, vomiting, and abdominal pain: NR</p>	<p>ALT, AST, and bilirubin: NR</p>

	GI/liver comorbidities: NR Disease severity: 8.9% mild, 82.5% moderate, 8.6% severe/critical		
Xu Y, 2020 ²⁸ First Affiliated Hospital of Guangzhou Medical University (Guangzhou), Dongguan People's Hospital (Dongguan), Foshan First People's Hospital (Foshan), Huizhou Municipal Central Hospital (Huizhou), First Affiliated Hospital of Shantou University Medical College (Shantou), Affiliated Hospital of Guangdong Medical University (Zhanjiang), Zhongshan City People's Hospital (Zhongshan) Guangdong Dates: ?-2/28/2020 Last follow-up: 2/28/2020	N: 45 Survival: death 0.2%, 24.4% discharged, 73.3% still hospitalized. Inclusion: Critically ill patients with COVID-19 pneumonia. Age: m 56.7 ± 15.4 Gender: 35.6% females GI/liver comorbidities: NR Disease severity: 100% critical	Diarrhea: 0% (0) Present on admission	AST or ALT >40: 37.8% (17) AST (N = 44) M 27 (IQR 22.0-39.5) ALT (N = 44) M 29 (IQR 20.1-50.0) Bilirubin (N = 44) M 0.91 (IQR 0.61-1.3)
Yan S, 2020 ²⁷ All Hainan Province Hainan	N: 168 Survival: 3.6%, 1.2% still hospitalized, 95.2% discharged. Inclusion: Inpatient with COVID-	Diarrhea: 7.1% (12) Present on admission 8/132 non-severe, 4/36 severe Vomiting: 4.2% (7)	AST >40: 17.3% (18/104) 7/75 non-severe, 11/29 severe ALT >40: 8.0% (9/112) 5/81 non-severe, 4/31 severe

<p>Dates: 1/22/2020-3/13/2020</p> <p>Last follow-up: 3/13/2020</p>	<p>19 based on rt-PCR.</p> <p>Age: M 51 (IQR 36-62) Gender: 51.8% females</p> <p>GI/liver comorbidities: 3.6% chronic liver disease Severity: 78.6% non-severe, 21.4% severe</p>	<p>Present on admission 5/132 non-severe, 2/36 severe</p> <p>Nausea: 5.4% (9) Present on admission 6/132 non-severe, 3/36 severe</p> <p>Abdominal pain: 4.2% (7) Present on admission 5/132 non-severe, 2/36 severe</p>	<p>Bilirubin >1.5: 0 M 0.51 (IQR 0.37-0.78)</p>
<p>Wang L, 2020³⁵</p> <p>First Affiliated Hospital of Zhengzhou University (Zhengzhou) Henan</p> <p>Dates: 1/21/2020-2/7/2020</p> <p>Last follow-up: 2/7/2020</p>	<p>N: 18 Survival: 0 died, 33.3% discharged, 66.7% still hospitalized</p> <p>Inclusion: Inpatients with COVID-19</p> <p>Age: M 39 (IQR 29-55) Gender: 50% females</p> <p>GI/liver comorbidities: NR Disease severity: NR</p>	<p>Diarrhea: 16.7% (3) Present on admission</p> <p>Vomiting, nausea, abdominal pain: NR</p>	<p>AST or ALT elevated: 25% (4)</p> <p>Bilirubin: NR</p>
<p>Chen X, 2020⁷¹</p> <p>First Hospital of Changsha (Changsha) and Loudi Central Hospital (Loudi) Hunan</p> <p>Dates: 1/23/2020-2/14/2020</p> <p>Last follow-up: 2/202/2020</p>	<p>N: 291 Survival: 0.7% died, 54.6% discharged, 44.7% still hospitalized</p> <p>Inclusion: Inpatients with COVID-19 based on rt-PCR</p> <p>Age: M 46 (IQR 34-59, range 1-84) Gender: 50.2% females</p> <p>GI/liver comorbidities: 5.2% chronic liver disease Disease severity: 10% mild, 72.8% moderate, 17.2%</p>	<p>Diarrhea: 8.6% (25) Present on admission 3/29 mild, 17/212 moderate, 5/50 severe/critical</p> <p>Nausea or vomiting: 5.8% (17) Present on admission 6/29 mild, 9/212 moderate, 2/50 severe/critical</p> <p>Abdominal pain: 0.3% (1) Present on admission 0/29 mild, 0/212 moderate, 1/50 severe/critical</p>	<p>AST >37: 15.1% (44) 5/29 mild, 23/212 moderate, 16/50 severe/critical M 24.7 (IQR 19.9-31.4)</p> <p>ALT >42: 10.3% (30) 4/29 mild, 16/212 moderate, 10/50 severe/critical M 20.7 (IQR 14.9-28.9)</p> <p>Bilirubin >1.2: 9.3% (27) 4/29 mild, 17/212 moderate, 6/50 severe/critical M 0.6 (IQR 0.5-0.9)</p>

	severe/critical		
<p>Liu S, 2020⁵³</p> <p>All Jiangsu Province Jiangsu</p> <p>Dates: 1/10/2020- 2/18/2020</p> <p>Last follow-up: 2/18/2020</p>	<p>N: 620 Survival: 0 died, 3.2% in ICU, 56.1% still hospitalized, 40.6% discharged</p> <p>Inclusion: Inpatient with COVID- 10 based on rt-PCR. Patients without records excluded.</p> <p>Age: m 44.5 ± 17.2 Gender: 47.4% females</p> <p>GI/liver comorbidities: NR Disease severity: 15.6% asymptomatic/mild, 75.8% moderate, 8.5% severe/critical</p>	<p>Diarrhea: 8.5% (53) Present on admission 4/97 asymptomatic/mild, 43/469 moderate, 6/53 severe/critically ill</p> <p>Nausea, vomiting, and abdominal pain: NR</p>	<p>AST (387) m 23.3± 18.5 m 27.3 ± 14.9 in mild/asymptomatic, 32.3 ± 17.5 in moderate, 42.9 ± 28.6 in severe/critically ill</p> <p>ALT (420) m 31.0 ± 22.4 m 26.8 ± 21.6 in asymptomatic/mild, m 31.2 ± 21.1 in moderate, m 39.3 ± 32.5 in severe/critically ill</p> <p>Bilirubin (460) m 0.6 ± 0.4 m 0.7 ± 0.5 mild/asymptomatic, m 0.6 ± 0.4 moderate, m 0.7 ± 0.4 severe/critically</p>
<p>Fan L, 2020⁶⁷</p> <p>Shenyang Chest Hospital (Shenyang) Liaoning</p> <p>Dates: 1/20/2020- 3/15/2020</p> <p>Last follow-up: NR</p>	<p>N: 55 Survival: 100% recovered</p> <p>Inclusion: Recovered hospitalized COVID-19 patients, based on rt-PCR.</p> <p>Age: m 46.8 Gender: 45.5% females</p> <p>GI/liver comorbidities: NR Disease severity: 85.4% mild, 14.5% severe</p>	<p>Diarrhea: 10.9% (6) 4/47 mild/moderate, 2/8 severe/critical</p> <p>Vomiting: 7.3% (4) 2/47 mild/moderate, 2/8 severe/critical</p> <p>Abdominal pain: NR</p>	<p>ALT m 40.6 m 27.8 in mild/moderate and m 57.1 in severe/critical</p> <p>Bilirubin m 19.5 m 19.0 in mild/moderate and m 22.4 in severe/critical</p> <p>AST: NR</p>
<p>Yao, 2020²⁵</p> <p>Tangdu Hospital (Xi'an) Shaanxi</p>	<p>N: 40 Survival:</p> <p>Inclusion: Inpatients with COVID-19. No baseline LFT abnormality.</p>	<p>Diarrhea: 7.5% (3) 8 patients developed diarrhea due to lopinavir/ritonavir.</p> <p>Nausea: 7.5% (3)</p>	<p>AST >46: 40% (16) Occurred as early as the 4th day up to the 26th day.</p> <p>ALT > 66: 52.5% (21) Occurred as early as the 4th day</p>

<p>Dates: 1/21/2020-2/21/2020</p> <p>Last follow-up: NR</p>	<p>Age: m 53.9 ± 15.8 (range 22-83)</p> <p>Gender: 37.5% females</p> <p>GI/liver comorbidities: 0% liver disease or damage.</p> <p>Disease severity: 45% non-severe, and 55% severe</p>	<p>Vomiting and abdominal pain: NR</p>	<p>up to the 26th day.</p> <p>Bilirubin >1.2: 25% (10) Occurred as early as the 4th day up to the 16th day. Mostly slight increase.</p> <p>Liver injury occurred in 17/22 critical cases 5/18 noncritical cases.</p>
<p>Tian S, 2020³⁶</p> <p>Liaocheng Infectious Diseases Hospital (Liaocheng) and Liaocheng People's Hospital (Liaocheng) Shandong</p> <p>Dates: NR</p> <p>Last follow-up: NR</p>	<p>N: 37</p> <p>Survival: 100% discharged</p> <p>Inclusion: Inpatients with COVID-19.</p> <p>Age: m 44.3 ± 1.67</p> <p>Gender: 54% females</p> <p>GI/liver comorbidities: 2.7% cirrhosis/liver cancer</p> <p>Disease severity: 13.5% mild, 81.1% moderate, 2.7% severe, 2.7% critical</p>	<p>Diarrhea or vomiting: 25.8% (8/31) Present on admission</p> <p>Vomiting or abdominal pain: NR</p>	<p>AST >40: 10.8% (4)</p> <p>ALT >40: 5.4% (2)</p> <p>Bilirubin >1: 35.1% (13)</p>
<p>Lu H, 2020⁵¹</p> <p>Shanghai Public Health Clinical Center Shanghai</p> <p>Dates: ?-2/9/2020</p> <p>Last follow-up: 2/9/2020</p>	<p>N: 265</p> <p>Survival: 0.4% died, 17.7% discharged.</p> <p>Inclusion: Inpatients with COVID-19 based on rt-PCR</p> <p>Age: NR</p> <p>Gender: NR</p> <p>GI/liver comorbidities: 0.4%</p> <p>Disease severity: 91.7% mild/moderate, 8.3% severe/critically ill</p>	<p>Diarrhea: 6.4% (17) Present on admission 17/243 mild/moderate and 0/22 severe/critical</p> <p>Nausea or vomiting: 2.3% (6) Present on admission 6/243 mild/moderate and 0/22 severe/critical</p> <p>Abdominal pain: NR</p>	<p>AST M 24 (IQR 19-33) M 24 (IQR 19-31) in mild/moderate and M 39.5 (IQR 29.7-53.5) in severe/critical</p> <p>ALT M 23 (IQR 15-33) M 21 (IQR 15-33) in mild/moderate and M 30 (24.5-34.5) in severe/critical</p> <p>Bilirubin M 0.5 (0.4-0.6)</p>
<p>Fu H, 2020⁶⁵</p>	<p>N: 52</p> <p>Survival: 100% (excluded)</p>	<p>Diarrhea: 13.5% (7/52) Present on admission</p>	<p>AST M 27 (IQR 21.2,34.0)</p>

<p>Chengdu Public Health Clinical Medical Center (Chengdu) Sichuan</p> <p>Dates: 1/1/2020-2/20/2020</p> <p>Last follow-up: 2/29/2020</p>	<p>patients who were not discharged)</p> <p>Inclusion: Inpatients with COVID-19 confirmed by RT-PCR. Excluded patients who died or were not discharged.</p> <p>Age: M 44.5 (IQR 33.0-56.5) Gender:46 % females</p> <p>GI/liver comorbidities: NR Disease severity: common coronavirus pneumonia type 73.1%, severe 19.2%, critically severe 7.7%</p>	<p>Nausea: 1.9 % (1/52) Present on admission</p> <p>Vomiting and abdominal pain: NR</p>	<p>ALT M 24 (IQR 15.3-49)</p> <p>Bilirubin 85 pts M 67.3 (IQR 63.5,71.4)</p> <p>Patients with labs on admission and discharge n=23 AST on presentation M 27 (IQR 23-35) After discharge M 25 (IQR 19-39)</p> <p>ALT On presentation M 25 (IQR 14-41) After discharge M 31 (IQR 15-41)</p> <p>Bilirubin On presentation M 66 (IQR 60-72) After discharge M 65 (IQR 60-69)</p>
<p>Fu H, 2020⁶⁶</p> <p>Third People's Hospital of Kunming (Kunming) Yunnan</p> <p>Dates: 1/26/2020-2/15/2020</p> <p>Last follow-up: NR</p>	<p>N: 36 Survival: 17% discharged, 6% ICU, 78% still hospitalized.</p> <p>Inclusion: Inpatients with COVID-19 based rt-PCR.</p> <p>Age:45 Gender: 55.6% females</p> <p>GI/liver comorbidities: NR Disease severity: mild 11% (4), common 83% (30), severe, critical 6% (2)</p>	<p>Diarrhea: % (3) Present on admission</p> <p>Vomiting, nausea, and abdominal pain: NR</p>	<p>AST 11.1% (4)</p> <p>ALT 11.1% (4)</p> <p>Bilirubin 30.56% (11)</p>
<p>Jin, 2020⁶⁰</p> <p>First Affiliated Hospital of College of Medicine, Zhejiang University (Hangzhou) Zhejiang</p>	<p>N: 651 Survival: 0.2% death, NR for the others</p> <p>Inclusion: Inpatients with COVID-19.</p> <p>Age: m 45 ± 14.4</p>	<p>Diarrhea: 8.6% (56) Present on admission and prior to treatment. Defined as loose stool > 3 times daily. Stool cultures were performed with negative results for all patients. C diff not detected in stool and no recent antibiotic use. Median duration was 4 days (IQR 3-6, range 1-9). Most was self-limiting.</p>	<p>AST >40: NR GI symptoms M 29.4 (IQR 29.9-38.6) vs no GI symptoms M 24.4 (IQR 19.0-32.0)</p> <p>ALT >50: NR</p>

<p>Dates: 1/17/2020-02/08/2020</p> <p>Last follow-up: 02/08/2020</p>	<p>Gender: 49.2% females</p> <p>GI/liver comorbidities: NR</p> <p>Disease severity: Severe/critical 9.8%</p>	<p>Nausea/vomiting: 4.3% (28) Present on admission. 11 only vomiting; 10 only nausea; 3 nausea, vomiting and diarrhea; 4 nausea and vomiting.</p> <p>Any GI Symptom: 11.4 (74) Nausea, vomiting or diarrhea.</p> <p>21 patients lacked respiratory symptoms of coughing and sputum production, and presented only with GI symptoms Severe/critical: 17/74 with GI symptoms vs 47/577 without GI symptom. In those with GI symptoms, risk factors for severe/critical disease were sputum production, increased LDH and increased glucose on multivariate analysis. ARDS: 5/74 with GI symptoms vs 12/577 without GI symptom Shock: 1/74 with GI symptoms vs 1/577 without GI symptom Liver injury: 13/74 with GI symptoms vs 51/577 without GI symptom Mechanical ventilation: 5/74 with GI symptoms vs 12/577 without GI symptom ICU admission: 5/74 with GI symptoms vs 12/577 without GI symptom</p>	<p>GI symptoms M 25.0 (IQR 15.8-38.5) vs no GI symptoms M 21.5 (IQR 15.0-32.8)</p> <p>Total bilirubin GI symptoms M 0.6 (IQR 0.4-0.8) vs no GI symptoms M 0.6 (IQR 0.4-0.8)</p>
<p>Qian, 2020⁴⁴</p> <p>Xiaoshan District People's Hospital (Hangzhou), Ningbo City First Hospital (Ningbo City), Ninghai County First Hospital (Ningbo City), Xiangshan County People's First Hospital (Ningbo City), Affiliated Hospital of</p>	<p>N: 91 Survival: 0% died, 34.1% discharged, 65.9% still hospitalized.</p> <p>Inclusion: Inpatients with COVID-19 (88 based on rt-PCR and 3 based on clinical diagnosis)</p> <p>Age: M 50 (IQR 36.5-57) Gender: 59% females</p> <p>GI/liver comorbidities: NR</p>	<p>Diarrhea: 23.1% (21) Present on admission</p> <p>Vomiting, nausea, and abdominal pain: not extracted</p>	<p>Not extracted</p>

Shaoxing University (Shaoxing) Zhejiang Dates: 1/20/2020-2/11/2020 Last follow-up: 2/16/2020	Disease severity: 90.1% mild and 9.9% severe		
Chen D, 2020 ⁷⁴ Wenzhou Central Hospital (Wenzhou) and Sixth People's Hospital of Wenzhou (Wenzhou) Zhejiang Dates: 1/11/2020-2/15/2020 Last follow-up: NR	N: 175 Survival: 29.7% discharge, not reported otherwise Inclusion: Inpatients with COVID-19 based on rt-PCR. Age: M 46 (IQR 34-54) Gender: 52.6% females GI/liver comorbidities: NR Disease severity: NR	Diarrhea: 19.4% (34) Present on admission Average of 6 episodes per day, and often ended within 1-4 days Vomiting, nausea, and abdominal pain: not extracted	Not extracted
Kuang Y, 2020 ⁵⁸ All Zhejiang Province Zhejiang Dates: 1/1/2020-2/10/2020 Last follow-up: NR	N: 944 Survival: NR Inclusion: All reported COVID-19 cases. Both inpatients and outpatients. Age: m 47.4 ± 22.9 Gender: 49.6% females GI/liver comorbidities: NR Disease severity: NR	Diarrhea: 2.7% (21) Vomiting, nausea and abdominal pain: NR	NR
USA Studies			
Arentz, 2020 ⁷⁵	N: 21 Survival: 52.4% died, 9.5% out	Diarrhea, nausea, vomiting, and abdominal pain: NR	AST m 273 (range 14-4432)

<p>Evergreen Hospital (Kirkland) Washington</p> <p>Dates: 2/20/2020-3/5/2020</p> <p>Last follow-up: 3/17/2020</p>	<p>of IC, 38.1% still in ICU.</p> <p>Inclusion: Critically ill COVID-19 patients.</p> <p>Age: m 70 (range 43-92) Gender: 48% females</p> <p>GI/liver comorbidities: 4.8% cirrhosis, 9.5% solid organ transplant Disease severity: 100% critically ill</p>		<p>ALT m 108 (range 11-1414)</p> <p>Bilirubin m 0.6 (range 0.2-1.1)</p>
<p>Cholankeril, 2020⁷⁰</p> <p>Stanford University Hospitals California</p> <p>Dates: 3/4/2020-3/24/2020</p> <p>Last follow-up: 3/24/2020</p>	<p>N: 116</p> <p>Survival: 0.9% died, 86.2% discharged, 4.3% still hospitalized.</p> <p>Inclusion: COVID-19 confirmed based on rt-PCR.</p> <p>Age: M 50 (IQR 35-67) Gender: 46.6% females</p> <p>GI/liver comorbidities: 2.6% chronic liver disease Disease severity: 71.6% evaluated in ER/clinic only, 20.7% admitted to the medical floor, and 7.8% admitted to ICU.</p>	<p>Diarrhea: 10.3% (12) Present on admission</p> <p>Nausea and/or vomiting: 10.3% (12) Present on admission</p> <p>Abdominal pain: 8.8% (10) Present on admission</p> <p>None of the patients had isolated GI symptoms or as the initial symptoms.</p> <p>31.9% reported GI symptoms. Median duration of GI symptoms was 1 day (IQR 0-4).</p>	<p>AST (N=65) M 35 (IQR 22-58) In those with any abnormal LFT, M 64 (IQR24-76)</p> <p>ALT (N=65) M 32 (IQR 22-48) In those with any abnormal LFT, M 59 (QR 22-76)</p> <p>Total bilirubin (N=65) M 0.4 (IQR 0.3-0.7) In those with any abnormal LFT, M 0.5 (IQR 0.3-0.7)</p> <p>26 patients developed liver enzyme elevation. 22 of them had normal baseline liver enzymes.</p>
<p>Nobel, 2020⁴⁷</p> <p>New York– Presbyterian Hospital / Columbia University Irving Medical Center New York</p>	<p>N: 278 Survival: 3.2% died,</p> <p>Inclusion: Patients tested for COVID-19 at clinic or emergency department for respiratory symptoms with intent to hospitalize or the same symptoms in essential</p>	<p>Diarrhea: 20.1% (56) Present on admission 42/207 admitted to hospital, 11/44 admitted to ICU, 0/9 died.</p> <p>Vomiting/vomiting: 22.7% (63) Present on admission 51/207 admitted to hospital, 8/44 admitted to ICU, 0/9 died.</p>	<p>AST: NR</p> <p>ALT: NR</p> <p>Bilirubin: NR</p>

<p>Dates: 3/10/2020-3/21/2020</p> <p>Last follow-up: 18 days after testing</p>	<p>personnel. Excluded patients with insufficient data (42). Charts randomly selected.</p> <p>Age: 11% aged 18-30, 25% aged 31-50, 37% aged 51-70, and 27% aged >70 Gender: 48% females</p> <p>GI/liver comorbidities: NR Disease severity: 74.5% admitted to hospital, 15.8% admitted to ICU, 3.2% died.</p>	<p>Abdominal pain: NR</p> <p>35% had GI symptoms. Patients with GI symptoms were more likely to have illness duration of ≥ 1 week (33%) compared to patients without symptoms (22%).</p> <p>Presence of GI symptoms (diarrhea or nausea/vomiting) was associated with a 70% increased risk of testing positive (adjusted OR 1.7, 95% CI 1.1 to 2.5)</p>	
<p>Hajifathalian, 2020⁶³</p> <p>NewYork-Presbyterian Hospital/Weill Cornell Medical Center New York</p> <p>Dates: 3/4/2020 - 4/9/2020</p> <p>Last follow-up: 4/16/2020</p>	<p>N: 1059 (768 inpatients and 291 outpatients)</p> <p>Survival: 9.1% died</p> <p>Inclusion: Adults with COVID-19, inpatients and outpatients.</p> <p>Age: m 61 \pm 18 Gender: 42.3% females</p> <p>GI/liver comorbidities: 1.6% IBD, 3.0% chronic liver disease, 2.4% solid organ transplant. Disease severity: NR</p>	<p>Diarrhea: 22.1% (234) Present on admission Inpatients 24.3% (187/768) and outpatients 16.1% (47/291).</p> <p>Vomiting: 8.3% (91) Present on admission Inpatients 8.7% (67/768) and outpatients 8.2% (24/291).</p> <p>Nausea: 15.3% (168) Present on admission Inpatients 16.0% (123/768) and outpatients 15.5% (45/291).</p> <p>Abdominal pain: 6.6% (72) Present on admission Inpatients 7.3% (56/768) and outpatients 5.5% (16/291).</p>	<p>AST ≥ 40: 56% (N = 844) m 60 \pm 79</p> <p>ALT ≥ 40: 39% (N = 844) m 50 \pm 65</p> <p>Bilirubin >1.2: 11% (N = 844) m 0.7 \pm 0.6</p> <p>Presence of liver injury at presentation was associated with higher risk of admission on multivariate analysis.</p>
<p>Kujawski, 2020⁵⁷</p> <p>Center of Disease Control California, Illinois, Arizona, Massachusetts,</p>	<p>N: 12</p> <p>Survival: 0% died, 8.3% hospitalized, 41.7% home isolation, 50% recovered.</p> <p>Inclusion: Patients under</p>	<p>Diarrhea: 33.3% (4) 8.3% (1) present on admission 3 while on remdesivir (1 of them had Giardia and C diff). 1 patient had symptoms for 1 day then developed fever and cough.</p> <p>Nausea: 25% (3)</p>	<p>AST: 58.3% (7) M 129 (IQR 46-190)</p> <p>ALT 58.3% (7) M 136 (IQR66-389)</p> <p>Bilirubin</p>

<p>Washington, Wisconsin</p> <p>Dates: 1/20/2020-2/5/2020</p> <p>Last follow-up: 2/22/2020</p>	<p>investigation who tested positive for COVID-19.</p> <p>Age: M 53 (range 21-68) Gender: 33.3% females</p> <p>GI/liver comorbidities: 8.3% HBV and 8.3% fatty liver disease. Disease severity: 5 outpatients and 7 inpatients.</p>	<p>8.3% (1) present on admission</p> <p>Abdominal pain: 16.7% (2)</p> <p>Stool PCR positive in 70% (7/10) patients</p>	<p>NR</p>
<p>Rubin, 2020⁴³</p> <p>Stanford University School of Medicine California</p> <p>Dates: ?-3/11/2020</p> <p>Last follow-up: NR</p>	<p>N: 54</p> <p>Survival: NR.</p> <p>Inclusion: COVID-19 patients, not clear otherwise.</p> <p>Age: M53.5 (IQR 32-75, range 20-91) Gender: 46.3% females</p> <p>GI/liver comorbidities: 1.8% HBV Disease severity: 33.3% inpatients and 66.7% outpatients</p>	<p>Diarrhea, nausea, vomiting, and abdominal pain: NR</p>	<p>AST Females m 73.4 ± 61.8 (9) and males m 45.1 ± 19.5 (14)</p> <p>ALT Females m 69.6 ± 65.2 (9) and males m 43.9 ± 25.8 (13)</p> <p>Bilirubin NR</p>
<p>Other countries</p>			
<p>COVID-19 National Emergency Response Center, 2020⁶⁹</p> <p>South Korea</p> <p>Dates: 1/10/2020-2/14/2020</p> <p>Last follow up: NR</p>	<p>N: 28</p> <p>Survival: NR</p> <p>Inclusion: Inpatients or outpatient with COVID-19</p> <p>Age: m 42.6 (range 20-73) Gender: 46.1% females</p>	<p>Diarrhea: 7%% (2) Present on admission 1 started 2 days after fevers and chills and 1 started 2 days after muscle aches</p> <p>Abdominal pain: 4% (1) Present on admission Stomach ache 2 days after muscle ache</p> <p>Vomiting and nausea: NR</p>	<p>NR</p>

	GI/liver comorbidities: NR Disease severity: NR		
Young, 2020 ²⁴ Singapore Dates: 1/23/2020- 2/3/2020 Last follow up: 2/25/2020	N: 18 Survival: NR Inclusion: Inpatients COVID-19 based on RT-PCR Age: M 47 (range 31-73) Gender: 50% females GI/liver comorbidities: NR Disease severity: NR (12 patients uncomplicated (67%) 6 required oxygen (33%))	Diarrhea: 17% (3) Present on admission None of these patients required supplemental oxygen Vomiting, nausea, and abdominal pain: NR Virus detected by PCR in stool in 4/8 (50%) and in whole blood 1/12 (8%) 4 of the 5 patients treated with lopinavir-ritonavir developed nausea, vomiting, and/or diarrhea, and 3 developed abnormal liver function test results	NR
Sun, 2020 ³⁹ The National Centre for Infectious Diseases Singapore Dates: 1/26/2020- 2/16/2020 Last follow up: NR	N: 54 Survival: NR Inclusion: Patients referred for testing for COVID-19. Age: M 42 (IQR 34-54) Gender: 46% females GI/liver comorbidities: 0 liver disease Disease severity: NR	GI symptoms: 37% (20/54) General GI symptoms per different models were associated with positive COVID aOR 3.73 (1.23 - 12.45)	AST, ALT, and bilirubin NR
Pung, 2020 ⁴⁶ Singapore Dates: ?-2/15/2020 Last follow-up: NR	N: 17 Survival: 0% died Inclusion: Inpatients COVID-19 based on PCR Age: M 40 (36-51) Gender: 59 % females GI/liver comorbidities: NR Disease severity: NR	Diarrhea: 23.5% (4) Nausea/Vomiting: 5.9%% (1) Abdominal pain: NR	AST, ALT and bilirubin: NR

<p>Tabata S, 2020³⁸ Diamond Princess Cruise Japan</p> <p>Dates: 2/11/2020- 2/25/2020</p> <p>Last follow-up: NR</p>	<p>N: 104 Survival: 0% died, NR otherwise</p> <p>Inclusion: Laboratory confirmed patients with COVID-19 on Diamond Princess Cruise ship</p> <p>Age: M 68 (IQR 46.8-75; range 25-93) Gender: 54.8% females</p> <p>GI/liver comorbidities: NR Disease severity: 31.7% asymptomatic, 41.3% mild, 26.9% severe.</p>	<p>Diarrhea: 9.6% (8) Present on admission. 2 additional patients develop diarrhea during the hospitalization</p> <p>Vomiting, nausea and abdominal pain: NR</p>	<p>AST >38: 17.3% (18) 9/76 (11.8%) nonsevere and 9/28 (32.1%) severe</p> <p>ALT >45: 16.3% (17) 10/76 (13.2%) nonsevere and 7/28 (25%) severe</p> <p>Bilirubin: NR</p>
<p>Kluytmans, 2020⁵⁹ Breda and Tiburg, The Netherlands</p> <p>Dates: 3/7/2020- 3/12/2020</p> <p>Last follow-up: NR</p>	<p>N: 86 Survival: 0 deaths, 2 required short hospitalization.</p> <p>Inclusion: Healthcare workers with fever or mild respiratory symptoms over 10 days with subsequent positive tests. Outpatients.</p> <p>Age: M 49 (range 22-66) Gender: 4.6% females</p> <p>GI/liver comorbidities: NR Disease severity: 2 hospitalized, 19 recovered</p>	<p>Diarrhea: 18.6% (16) Interviewed within 7 days of onset of symptoms: 5/31, Interviewed after 7 days of onset of symptoms: 11/55</p> <p>Decreased appetite or nausea: 17.4% (15) Interviewed within 7 days of onset of symptoms: 1/31, Interviewed after 7 days of onset of symptoms: 14/55</p> <p>Abdominal pain: 5.8% (5) Interviewed within 7 days of onset of symptoms: 1/31, Interviewed after 7 days of onset of symptoms: 3/55</p>	<p>AST, ALT and bilirubin: NR</p>
<p>Wolfel, 2020³² Munich, Germany</p> <p>Dates: 1/23/2020-?</p> <p>Last follow-up: NR</p>	<p>N: 9 Survival: NR</p> <p>Inclusion: lab confirmed SARS-Co-V-2 in upper respiratory specimens</p> <p>Age: NR Gender: NR</p>	<p>Diarrhea: 22% (2) Present on admission Diarrhea was never the only symptom PCR was positive for up to 11 days; Authors were not able to isolate infectious virus, despite high stool RNA viral loads.</p> <p>Vomiting, nausea and abdominal pain: NR</p>	<p>AST, ALT and bilirubin: NR</p>

	GI/liver comorbidities: NR Disease severity: NR		
Dreher, 2020 ⁶⁸ Aachen, Germany Dates: 2/1/2020-3/1/2020 Last follow up: NR	N: 50 Survival: 14% died, 16% discharged, 70% still hospitalized Inclusion: Inpatients with laboratory confirmed COVID-19 Age: median 65 (IQR 58-76) Gender: 34% females GI/liver comorbidities: chronic liver failure 8%, chronic hepatitis 10% Disease severity: 48% ARDS, 52% non-ARDS	Diarrhea: 16% (8/50) Present on admission 6/24 ARDS, 2/26 non-ARDS Nausea: 1/50 Present on admission 0/24 ARDS, 1/26 nonARDS Vomiting: 2/50 Present on admission 1/24 ARDS, 1/26 nonARDS Stool PCR done in 15 pts and found positive in 2 pts with ARDS	AST, ALT and bilirubin: NR
Gritti, 2020 ⁶⁴ Papa Giovanni XXIII Hospital Bergamo, Italy Dates: 3/11/2020-3/24/2020 Last follow up: NR	N: 21 Survival: 4.7% died, NR for the others Inclusion: Inpatients with confirmed COVID-19 who received Age: m 64 (range 48-75) Gender: 14% females GI/liver comorbidities: NR Disease severity: NR	Diarrhea: 23.8% (5) Present on admission Nausea or vomiting, or abdominal pain: NR	AST, ALT and bilirubin: NR
Spiteri, 2020 ⁴⁰ Germany, Finland, Italy, Russia, Spain, France, Sweden, and Belgium Dates:	N: 38 Survival: 2.6% died, 11.4% still hospitalized Inclusion: Inpatients (N=35) and outpatients (N=2) with COVID-19 confirmed based on rt-PCR	Diarrhea: 3.2% (1/31) Present on diagnosis Nausea: 3.2% (1/31) Present on diagnosis Abdominal pain: NR	AST, ALT and bilirubin: NR

<p>1/24/2020-2/21/2020</p> <p>Last follow up: 2/21/2020</p>	<p>Age: median 42 (range 2-81) Gender: 34.2% females</p> <p>GI/liver comorbidities: NR Disease severity: NR</p>		
<p>COVID-19 National Incident Room Surveillance Team, 2020³⁷ Australia</p> <p>Dates: National data until 3/14/2020</p> <p>Last follow-up: 3/14/2020</p>	<p>N: 295 Survival: 1.0% died</p> <p>Inclusion: All individuals with COVID-19 (both outpatients and inpatients)</p> <p>Age: M 47 (range 0-94) Gender: (approximately) 50% female</p> <p>Comorbidities: NR Disease severity: NR</p>	<p>Diarrhea: 16.3% (48)</p> <p>Nausea/vomiting: 11.5% (34)</p> <p>Abdominal pain: 2.0% (6)</p>	<p>No lab data reported</p>
<p>Abbreviations: M, median; IQR, interquartile range; m, mean; ±, standard deviation; NR, not reported; N, number of patients; rt-PCR, real time reverse transcription polymerase chain reaction;</p>			

Supplement Table 2: Direct Evidence of Proposed COVID-19 Therapies

Direct Evidence of Proposed COVID-19 Therapies				Gastrointestinal Adverse Effects				
Medication class	Medication	Source*	Study Design	Nausea/vomiting	Abdominal pain	Diarrhea	Jaundice	Hepatotoxicity
ANTI-VIRAL	Favipiravir	Cai 2020	Open-label control study (favipiravir and lopinavir/ritonavir) for COVID-19	NR	NR	2/35 (5.7%) had diarrhea		1/35 (2.9%)
		Chen 2020 Medrxiv (unpublished)	Open-label RCT for favipiravir vs arbidol (n=120) in COVID-19	"Digestive tract reactions" 16/116 (13.79%)			NR	9/116 (7.76%)
	Lopinavir/ritonavir	Cao 2020	RCT in severe COVID-19, n=199	10/95 with nausea + 6/96 vomiting (reported separately) vs 0/99 with nausea and 0/99 with vomiting in control	4/95 in treatment group vs 2/99 in control group	4/95 in treatment group vs 0/99 in control group	6/95 in treatment group vs. 5/99 in control group	Elevated AST: 4/95 in treatment vs. 9/99 in control group; Elevated ALT: 2/95 in treatment vs 5/99 in control group
	Remdesivir	Holshue 2020	Case report (first COVID in US): remdesivir given day 7; no AEs reported					
ANTI-MALARIAL	Chloroquine	Cortegiani 2020	Systematic review on efficacy & safety in COVID-19	Not reported in SR or primary studies				
	Hydroxychloroquine							

*Sources include existing systematic reviews where possible. If not available, primary sources are listed

Supplement Table 3: Indirect Evidence of Proposed COVID-19 Therapies

Indirect Evidence of Proposed COVID-19 Therapies										
Medication class	Med	Source*	Indirect	Gastrointestinal Adverse Events						
				Nausea/vomiting	Abdominal pain	Diarrhea	Jaundice	Hepatotoxicity	Other	
ANTI-VIRAL	Lopinavir/ritonavir	FDA / Manufacturer's label	HIV	nausea (5-16%); vomiting (children 21%; adults 2-7%)	reported 1-11%	7-28%; greater with once-daily dosing		increased serum ALT: 1-11%; hepataitis including AST/ALT/GGT elevations: 4%; hyperbilirubinemia (children 3%l adults 1%)	dysgeusia (children 22%; adults <2%); hyperamylasemia (3-8%), dyspepsia (<6%), increased lipase (3-5%), flatulence (1-4%), gastroenteritis (3%)	
		NIH Liver Tox	HIV					Range from mild to ALF. Recovery takes 1-2 months. Do not rechallenge with medication. Monitor for exacerbation of HBV/HCV		
		Momattin H 2019 ¹	MERS	Prevalence of GI AEs not reported in this SR						
		Yao 2020 ²	SARS/MERS	AEs not reported in this SR (can check primary studies)						SARS: 2 retrospective cohort studies (combined with steroids); MERS: 1 RCT combined with IFN, 1 retrospective cohort combined with IFN/ribavirin, and 2 case reports also combined with IFN/ribavirin

	Remdesivir	Al-Tawfiq 2020 ³	MERS							
		Sheahan 2020 ⁴	MERS							
ANTI-MALARIAL	Chloroquine	FDA / Manufacturer's label / NIH Liver Tox	Malaria	reported; frequency not defined	abdominal cramps reported; frequency not defined	reported; frequency not defined		rarely linked to aminotransferase elevations or clinically apparent liver injury. In pts with AIP or PCT, it can trigger an attack with fever and serum aminotransferase elevations, sometimes resulting in jaundice	Minor metabolism by liver (~30%); mostly excreted in urine	Likelihood score: D (possible rare cause of clinically apparent liver injury)
	Hydroxychloroquine	FDA / Manufacturer's label	Malaria / SLE	reported; frequency not defined	reported; frequency not defined	reported; frequency not defined		same as chloroquine above; can be exchanged with chloroquine as most reactions are hypersensitivity and no known cross reactivity to hepatic injury		Likelihood score: D (possible rare cause of clinically apparent liver injury)

1. Momattin H, Al-Ali AY, Al-Tawfiq JA. A Systematic Review of therapeutic agents for the treatment of the Middle East Respiratory Syndrome Coronavirus (MERS-CoV). Travel Med Infect Dis. 2019 Jul - Aug;30:9-18.

2. Yao TT, Qian JD, Zhu WY, et al. A systematic review of lopinavir therapy for SARS coronavirus and MERS coronavirus-A possible reference for coronavirus disease-19 treatment option. J Med Virol. 2020 Feb 27

3. Al-Tawfiq JA, Al-Homoud AH, Memish ZA. Remdesivir as a possible therapeutic option for the COVID-19. Travel Med Infect Dis. 2020 Mar 5:101615.

4. **Sheahan** TP, Sims AC, Leist SR, et al. Comparative therapeutic efficacy of remdesivir and combination lopinavir, ritonavir, and interferon beta against **MERS**-CoV. Nat Commun. 2020 Jan 10;11(1):222.